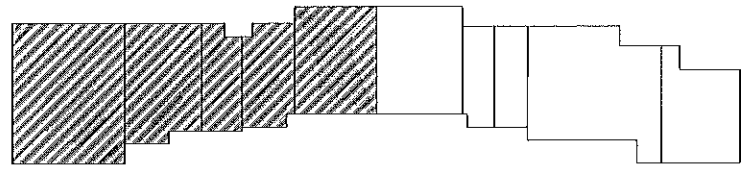
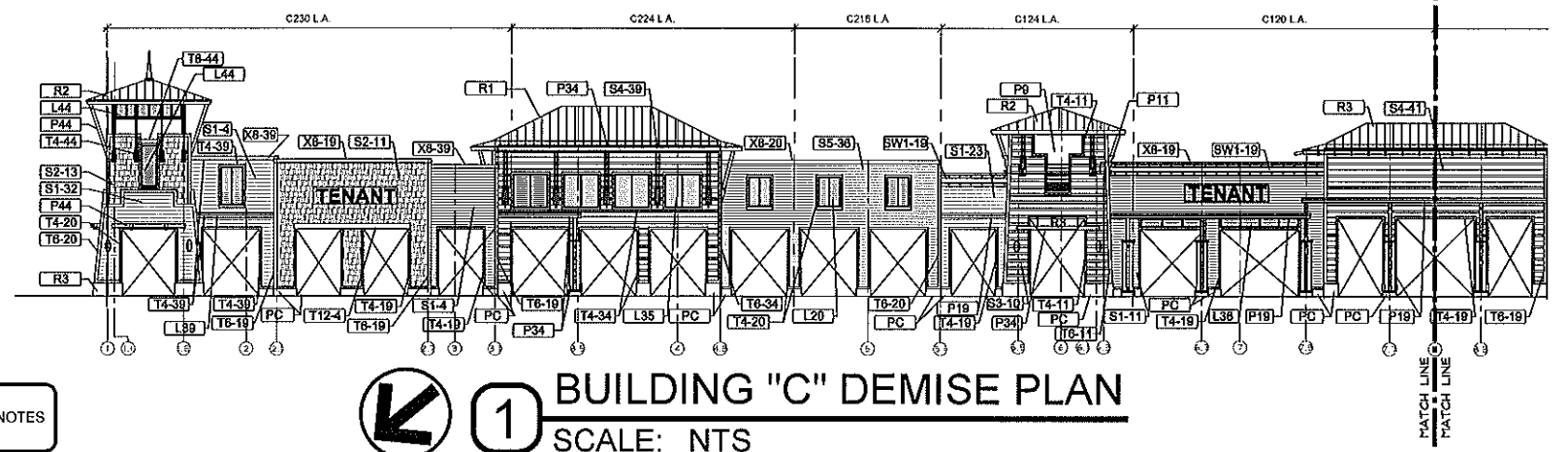
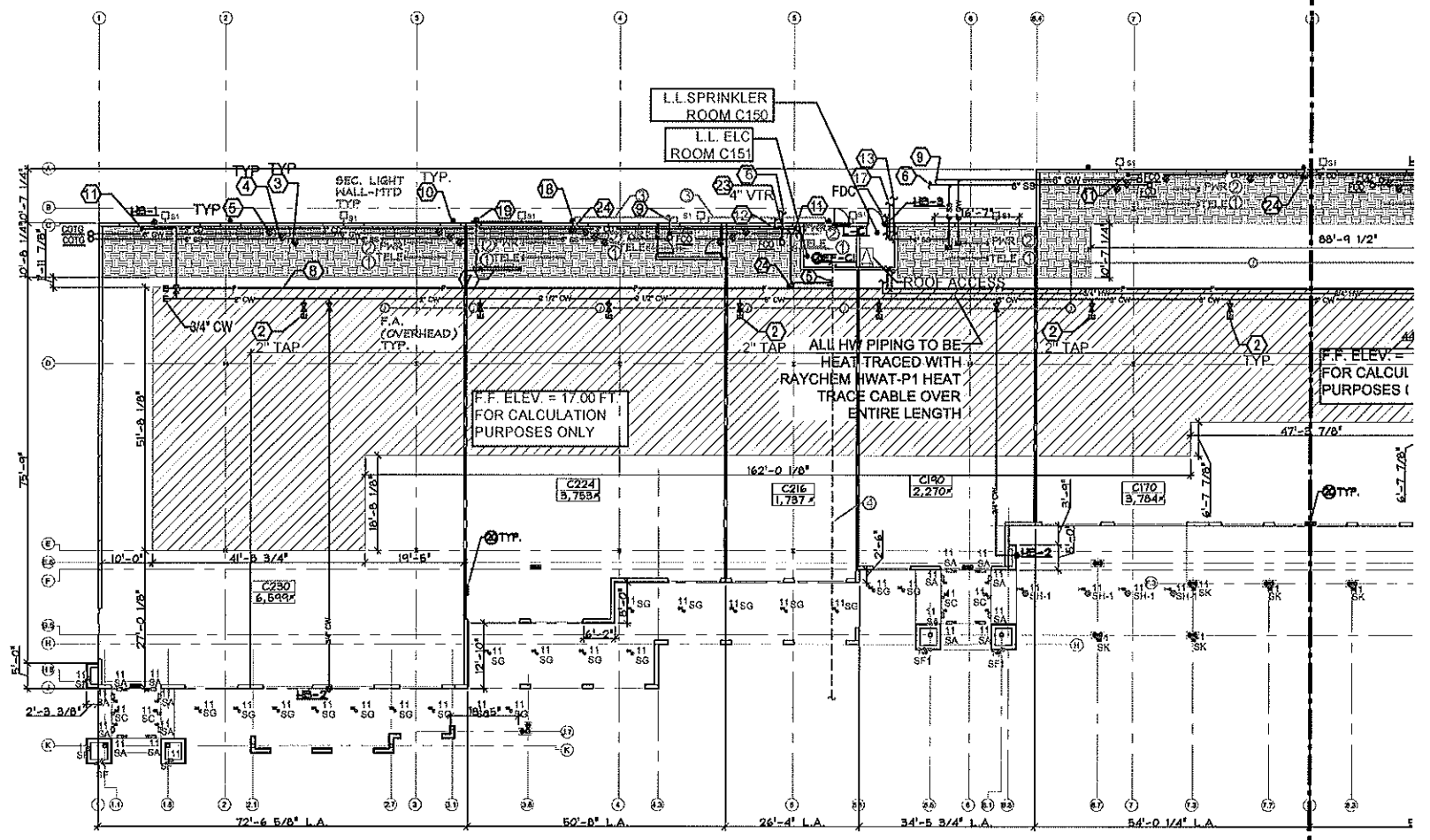
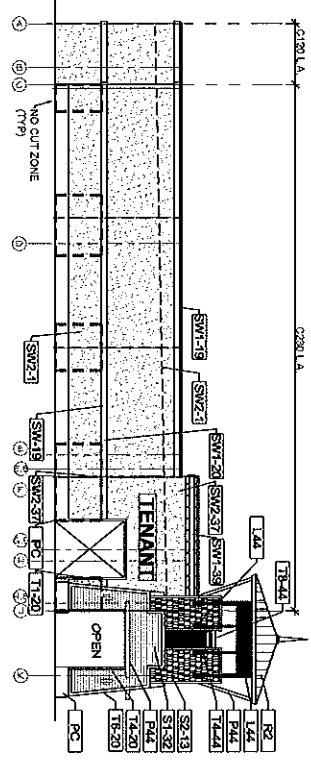
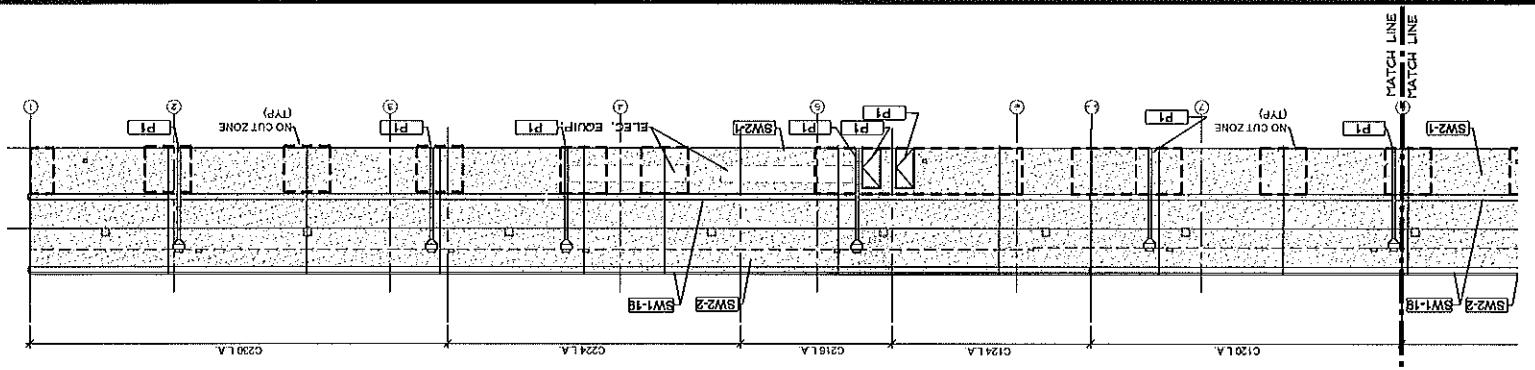


REV.	DATE	DESCRIPTION

PIER PARK TOWN CENTER  
BUILDING C  
701 PIER PARK DRIVE  
PANAMA CITY BEACH, FL 32401

**SIMON**

DESIGNED BY:	REVIEWED BY:
SKS	CJB
CHECKED BY:	APPROVED BY:
KLW	KLW
REASON FOR ISSUE:	
FINAL	
PRINTED: 10/02/07	
PLOT SCALE: 1:2	
DRAWING NAME: DEMISE PLANS	
SHEET #	
<b>DP-1</b>	
PROJECT # 070011	



**2** KEY PLAN  
SCALE: NTS

NOTE:  
REFER TO DP-3 FOR NOTES  
AND LEGENDS.

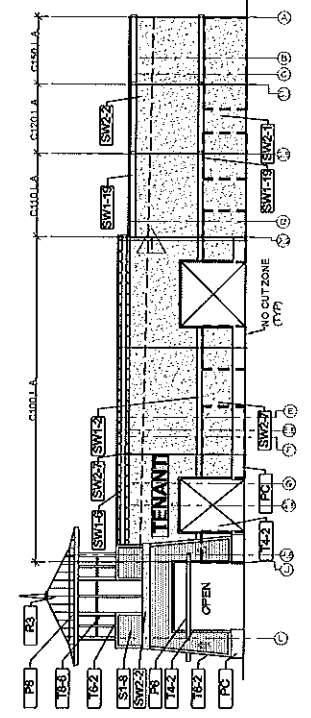
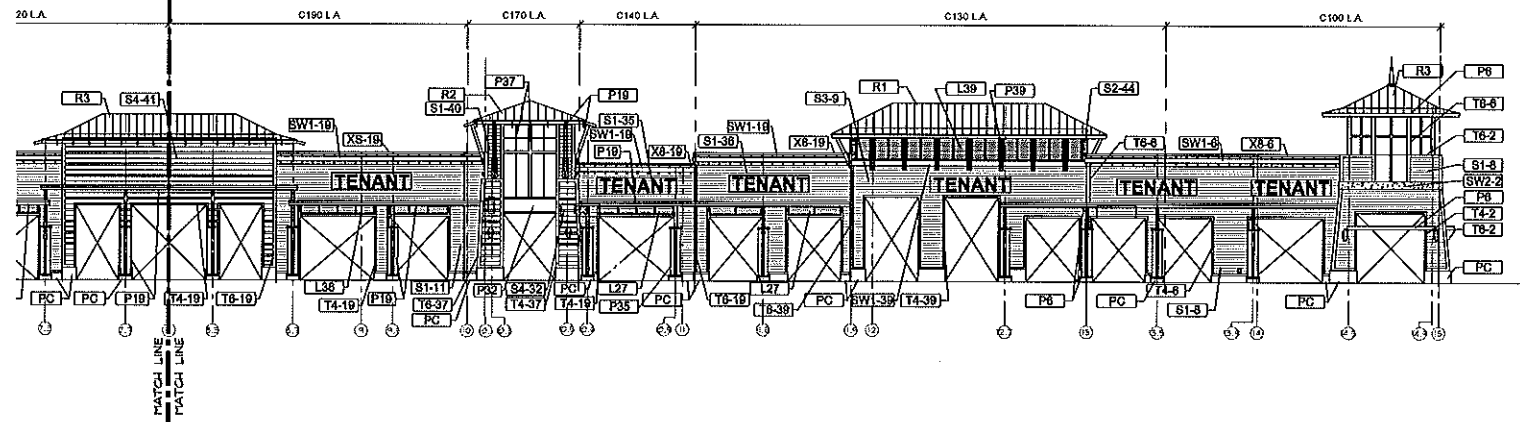
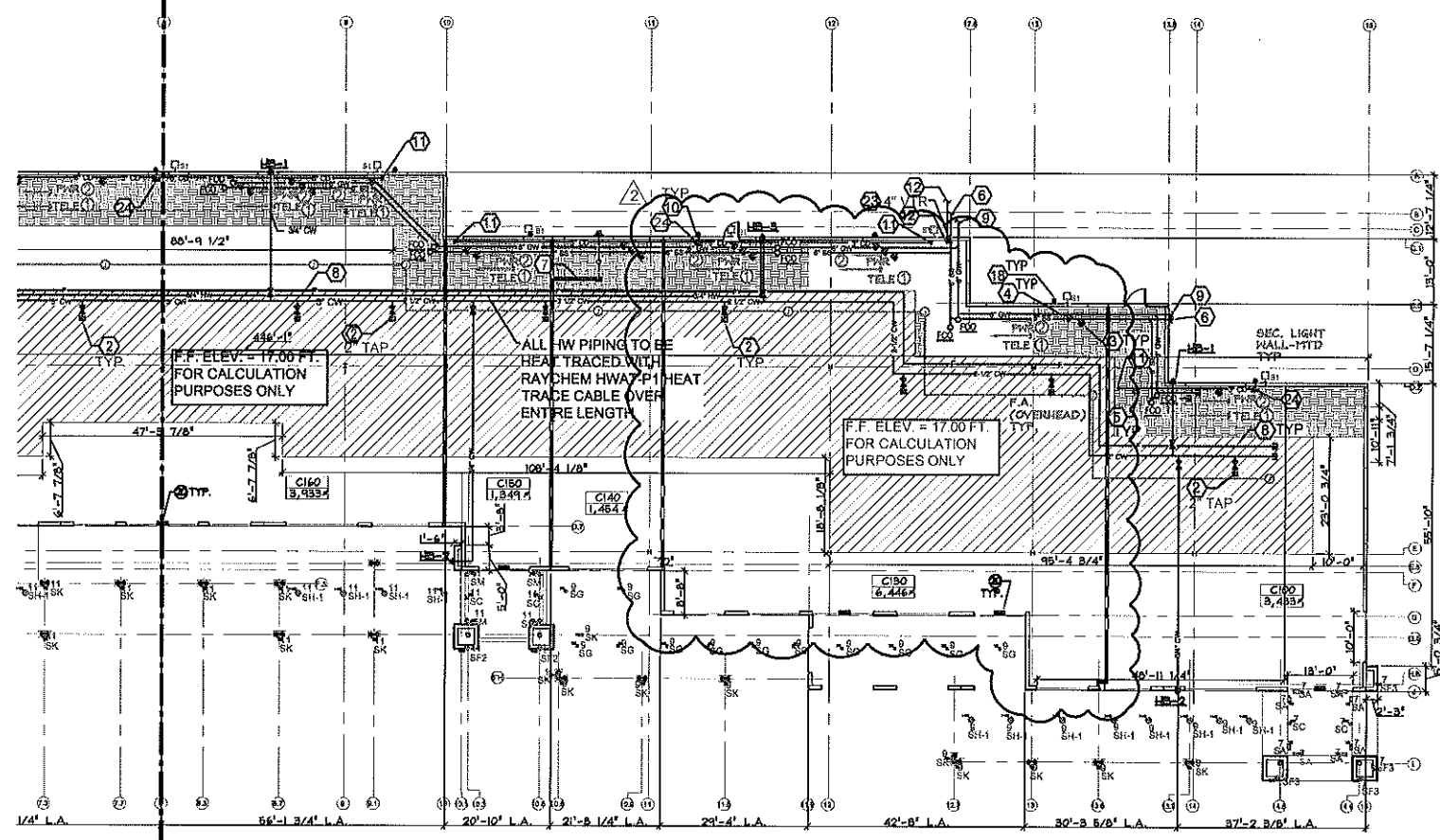
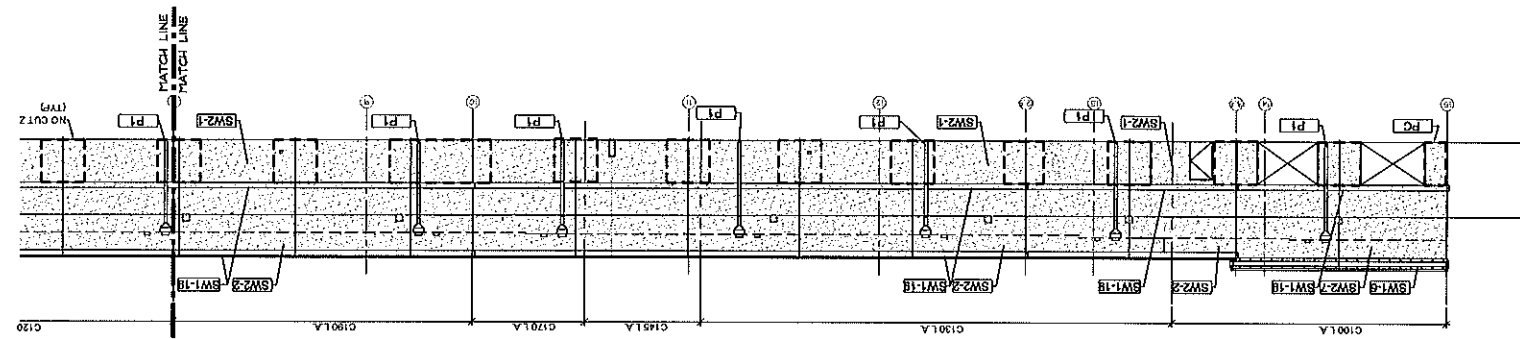
**1** BUILDING "C" DEMISE PLAN  
SCALE: NTS

REV.	DATE	DESCRIPTION
1	06/05/07	T. RVS
2	10/02/07	TSD REV

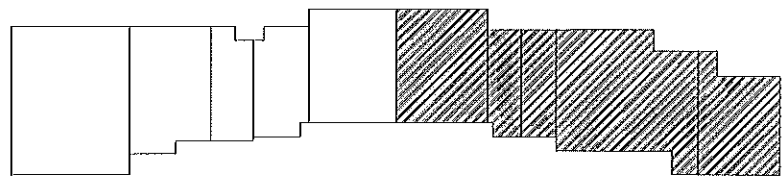
PIER PARK TOWN CENTER  
BUILDING C  
701 PIER PARK DRIVE  
PANAMA CITY BEACH, FL 32401

**SIMON**

DESIGNED BY: SKS	REVIEWED BY: CJB
CHECKED BY: KLW	APPROVED BY: KLW
REASON FOR ISSUE: FINAL	
PRINTED: 10/02/07	
PLOT SCALE: 1:2	
DRAWING NAME: DEMISE PLANS	
SHEET # <b>DP-2</b>	
PROJECT # 070011	



NOTE:  
REFER TO DP-3 FOR NOTES  
AND LEGENDS.



**2** KEY PLAN  
SCALE: NTS

**1** BUILDING "C" DEMISE PLAN  
SCALE: NTS

**EXTERIOR PAINT LEGEND**

P1	MFR: DUNN EDWARDS COLOR: DE 6177 - THATCHED ROOF
P2	MFR: DUNN EDWARDS COLOR: DE 6176 - CREAMY CAMEO
P3	MFR: DUNN EDWARDS COLOR: DE 5280 - STILL MORNING
P4	MFR: DUNN EDWARDS COLOR: DE 5200 - YAMS
P5	MFR: DUNN EDWARDS COLOR: DE 5277 - RICH HONEY
P6	MFR: DUNN EDWARDS COLOR: DE 5538 - BONSAI
P7	MFR: DUNN EDWARDS COLOR: DE 5536 - DILL GRASS
P8	MFR: DUNN EDWARDS COLOR: DE 5540 - TINTED MINT
P9	MFR: DUNN EDWARDS COLOR: DE 5353 - GOLDEN CREST
P10	MFR: DUNN EDWARDS COLOR: DE 5346 - QUACK QUACK

**EXTERIOR PAINT LEGEND**

P21	MFR: DUNN EDWARDS COLOR: DE 5915 - CHAMPION BLUE
P22	MFR: DUNN EDWARDS COLOR: DE 5914 - BOSSA NOVA BLUE
P23	MFR: DUNN EDWARDS COLOR: DE 5913 - MIDNIGHT BLUSH
P24	MFR: DUNN EDWARDS COLOR: DE 5479 - HAY DAY
P25	MFR: DUNN EDWARDS COLOR: DE 5478 - BREATH OF SPRING
P26	MFR: DUNN EDWARDS COLOR: DE 5173 - DEEP COLAR
P27	MFR: DUNN EDWARDS COLOR: DE 5172 - LA TERRA
P28	MFR: DUNN EDWARDS COLOR: DE 5171 - OCTOBER HAZE
P29	MFR: DUNN EDWARDS COLOR: DE 5748 - LOCH NESS
P30	MFR: DUNN EDWARDS COLOR: DE 5747 - STONE BRIDGE

**EXTERIOR PAINT LEGEND**

P11	MFR: DUNN EDWARDS COLOR: DE 5344 - CREAMED BUTTER
P12	MFR: DUNN EDWARDS COLOR: DE 5900 - ENCHANTING SKY
P13	MFR: DUNN EDWARDS COLOR: DE 5899 - SAPPHIRE FOG
P14	MFR: DUNN EDWARDS COLOR: DE 5898 - PRIM BLUE
P15	MFR: DUNN EDWARDS COLOR: DE 5020 - MAHOGANY CHERRY
P16	MFR: DUNN EDWARDS COLOR: DEA 100 - PUTNAM PLUM
P17	MFR: DUNN EDWARDS COLOR: DE 5019 - ROSEWINE
P18	MFR: DUNN EDWARDS COLOR: DE 6170 - RICE BOWL
P19	MFR: DUNN EDWARDS COLOR: DEW 337 - GARDENIA
P20	MFR: DUNN EDWARDS COLOR: DEW 383 - COOL DECEMBER

**EXTERIOR PAINT LEGEND**

P31	MFR: DUNN EDWARDS COLOR: DE 5746 - ASPEN HUSH
P32	MFR: DUNN EDWARDS COLOR: DE 5745 - BARRER REEF
P33	MFR: DUNN EDWARDS COLOR: DE 5744 - SEA PORT
P34	MFR: DUNN EDWARDS COLOR: DE 5788 - AGEAN SEA
P35	MFR: DUNN EDWARDS COLOR: DE 5787 - PACIFIC PALISADE
P36	MFR: DUNN EDWARDS COLOR: DE 5786 - EASTERN SKY
P37	MFR: DUNN EDWARDS COLOR: DE 5774 - THUNDERCLOUD
P38	MFR: DUNN EDWARDS COLOR: DE 5472 - LUSTROUS YELLOW
P39	MFR: DUNN EDWARDS COLOR: DE 5480 - BABY FROG
P40	MFR: DUNN EDWARDS COLOR: DE 5124 - SOUTHWESTERN CLAY

**EXTERIOR PAINT LEGEND**

P41	MFR: DUNN EDWARDS COLOR: DE 5117 - REDWOOD CITY
P42	MFR: DUNN EDWARDS COLOR: DE 5670 - GROWTH
P43	MFR: DUNN EDWARDS COLOR: DE 5473 - CITRON
P44	MFR: DUNN EDWARDS COLOR: DE 5908 - BELLFLOWER
P45	MFR: DUNN EDWARDS COLOR: DE 6374 - SILVER POLISH

**MECHANICAL NOTES**

- DO NOT ROUTE ANY PIPING OVER OR THRU ELECTRICAL ROOM.
- VALVED AND CAPPED 1 1/4" CW STUB-OUT FOR CONNECTION BY TENANT UNLESS NOTED OTHERWISE.
- 4" PLUGGED SS STUB-OUT EXTENDED TO ABOVE GRADE.
- 6" GW STUB-OUT ABOVE GRADE WITHIN LEAVE-OUT SPACE.
- 2" CAPPED CAST IRON NO-HUB CONDENSATE DRAIN STUB-OUT.
- 6" SANITARY SERVICE LINE.
- GAS MAIN LINE UP WALL AND ACROSS ROOF AS SHOWN.
- DESIGNING FIRE PROTECTION CONTRACTOR SHALL DESIGN AND INSTALL SPRINKLER RISER & MAIN PER FIRE PROTECTION SUBNOTE FOR LEASE.
- 6" GREASE WASTE LINE TO AND FROM GREASE INTERCEPTORS.
- 3" CONDENSATE LINE TIE INTO DOWN SPOUT.
- END-OF-LINE FOR CONDENSATE 3" DRAIN PIPE UP THRU ROOF FOR VENTING AND CLEAN OUT PURPOSES.
- 3" VENT LINE FROM GREASE INTERCEPTORS.
- 6" FIRE SPRINKLER SERVICE LINE FROM MAIN.
- 8" FIRE SPRINKLER SERVICE LINE FROM MAIN.
- NOT USED.
- NOT USED.
- NOT USED.
- 6" STORM DRAIN LINE WITH 1" AIR GAP.
- 8" STORM DRAIN LINE WITH 1" AIR GAP.
- 24X24 LOUVER IN WALL OF UPPER LEVEL ATTIC WALLS FOR ATTIC VENTILATION.
- 6" GREASE WASTE.
- DEDICATED 3" DOMESTIC WATER ENTRY LINE FROM 3" METER FOR RESTAURANT TENANT.
- DEDICATED 6" GW STUBBED 5'-0" INTO TENANT SPACE WITH TWCO. AND 4" VTR.
- 3" HORIZONTAL CLEANOUT FOR CONDENSATE LINE.
- 6" SD DOWN AT COLUMN. CLEAN-OUT ABOVE FINISHED FLOOR.

**ELECTRICAL NOTES**

- 1" EMPTY CONDUIT STUBBED INTO TENANT SPACE FROM TELEPHONE BOARD IN LANDLORD ELECTRICAL ROOM 1B2.
- 2" EMPTY CONDUIT STUBBED INTO TENANT SPACE FROM LANDLORD ELECTRICAL SERVICE AT REAR OF BUILDING.
- LANDLORD ELECTRICAL TROUGH.
- 1" CONDUIT FROM FIRE ALARM EQUIPMENT IN MALL OFFICE IN BUILDING E.

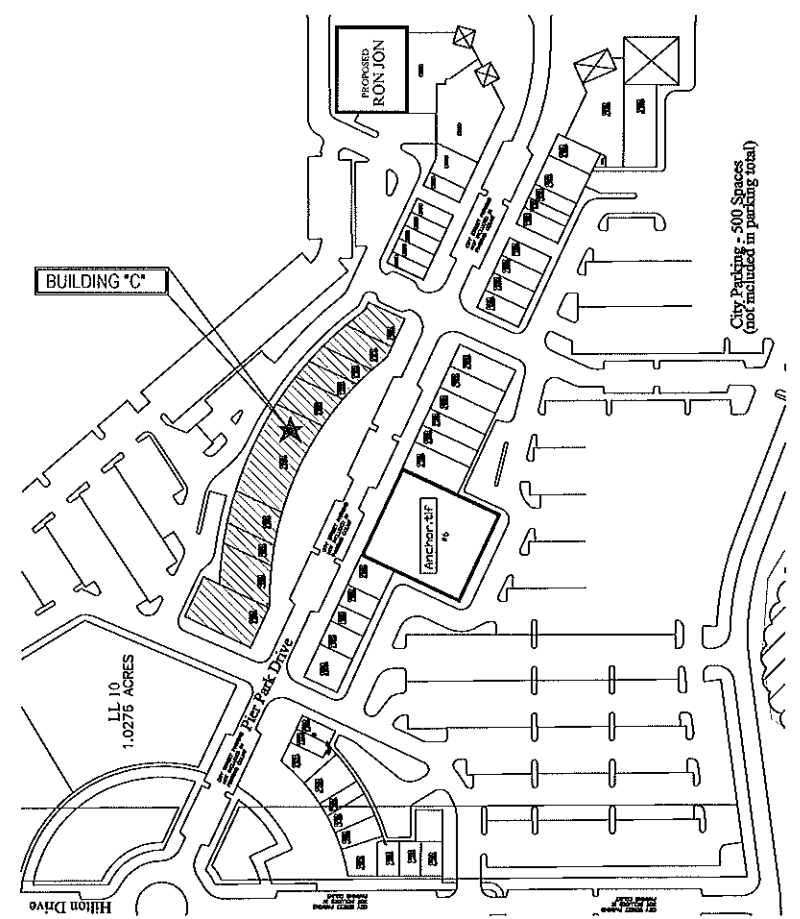
**DEMISE PLAN & ELEVATION LEGEND**

MECHANICAL	PREDESIGNED RTU STRUCTURAL LOAD ZONE ON ROOF
ELECTRICAL FIRE ALARM TELEPHONE	CONCRETE LEAVEOUT
PLUMBING SPRINKLERS	TENANT TENANT SIGN BAND HATCH
ARCHITECTURAL	REFER TO EXTERIOR LEGEND
L.A. = LEASE AREA	REFER TO EXTERIOR PAINT LEGEND

**EXTERIOR LEGEND**

E	E.I.F.S.
M	METAL COPING
PC	PRECAST STONE
S	FIBER CEMENT SIDING HARDPLANK SIDING
T	TRIM
C	CONCRETE BLOCK
L	PREFAB/PREFIN. DECO ALUMINUM LOUVER/ SHUTTER
CS	LITHOCHROME TINTURA STAIN CONCRETE WALL STAIN
R	ROOFING
LS	LOUVER/ SHUTTER
WD	WOOD
SW	STUCCO WALL SYSTEM

PLEASE MAKE NOTE THAT DURING THE COURSE OF FABRICATION OF THE SHELL BUILDING TILT WALL PANELS A CONCRETE RELEASING AGENT IS APPLIED TO THE BUILDING SLAB. THIS AGENT MAY AFFECT THE ADHESION OF FINISH FLOOR MATERIAL GLUES, MASTICS AND MORTARS. THIS AGENT MAY ALSO AFFECT THE COLOR OF CONCRETE STAINS IF YOU CHOOSE TO STAIN THE CONCRETE AS YOUR FINISH.



**KEY PLAN**  
SCALE: NTS

NOTES AND LEGENDS ARE BASED ON "KA" SHELL DRAWINGS DATED 01-10-07

REV.	DATE	DESCRIPTION

PIER PARK TOWN CENTER  
BUILDING C  
701 PIER PARK DRIVE  
PANAMA CITY BEACH, FL 32401

**SIMON**

DESIGNED BY:	REVIEWED BY:
SKS	CKB
CHECKED BY:	APPROVED BY:
KLW	KLW

REASON FOR ISSUE:  
FINAL  
PRINTED:  
10/02/07  
PLOT SCALE:  
1:2  
DRAWING NAME:  
NOTES & LEGENDS  
SHEET #  
**DP-3**  
PROJECT #  
070011