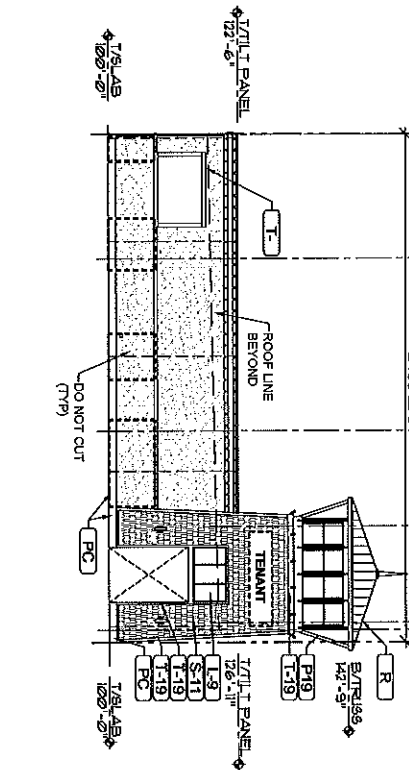
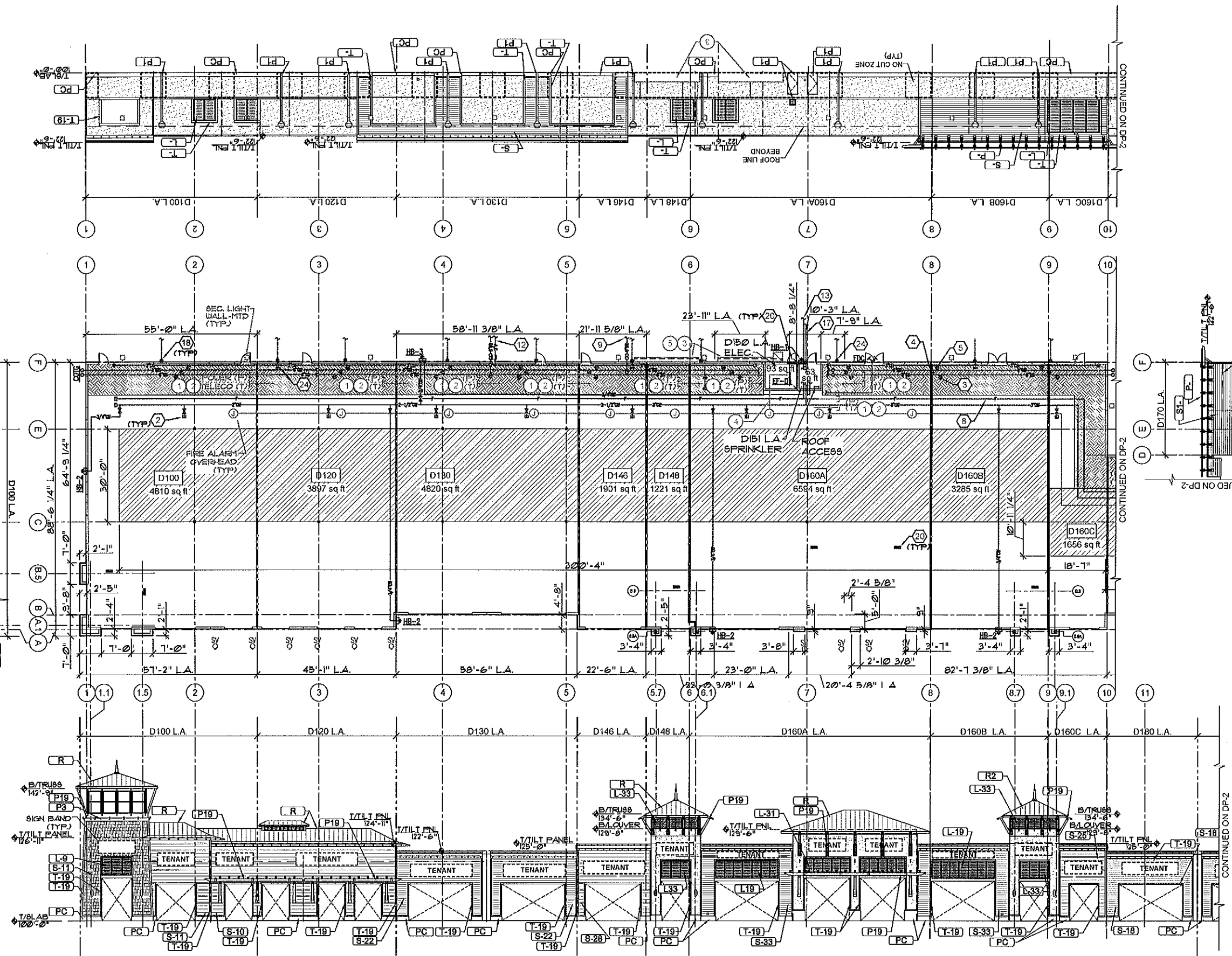


| REV. | DATE | DESCRIPTION |
|------|------|-------------|
| | | |
| | | |
| | | |

PIER PARK TOWN CENTER
BUILDING "D"
700 PIER PARK DRIVE
PANAMA CITY BEACH, FL 32401

SIMON

| | |
|-------------------|--------------|
| DESIGNED BY: | REVIEWED BY: |
| SKS | CJB |
| CHECKED BY: | APPROVED BY: |
| KLW | KLW |
| REASON FOR ISSUE: | |
| REVIEW | |
| PRINTED: | |
| 10/01/07 | |
| PLOT SCALE: | |
| 1:2 | |
| DRAWING NAME: | |
| DEMISE WALL PLAN | |
| SHEET # | |
| DP-1 | |
| PROJECT # | 070016 |



2 KEY PLAN
SCALE: NTS

1 BUILDING "D" DEMISE PLAN
SCALE: NTS

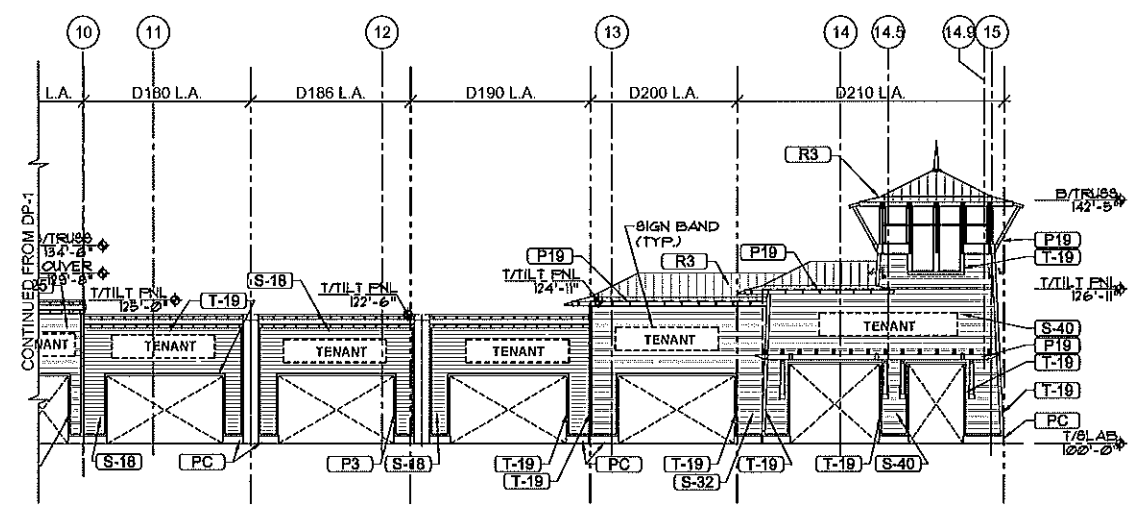
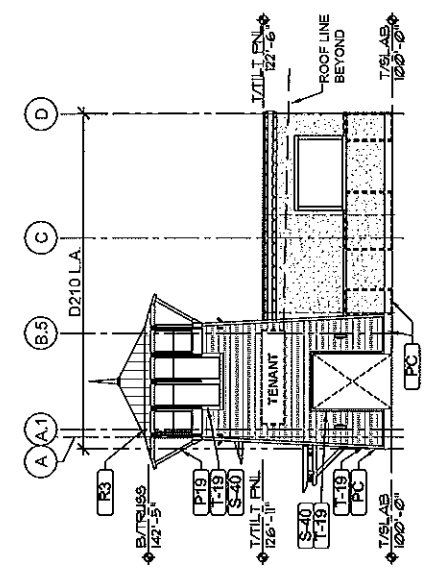
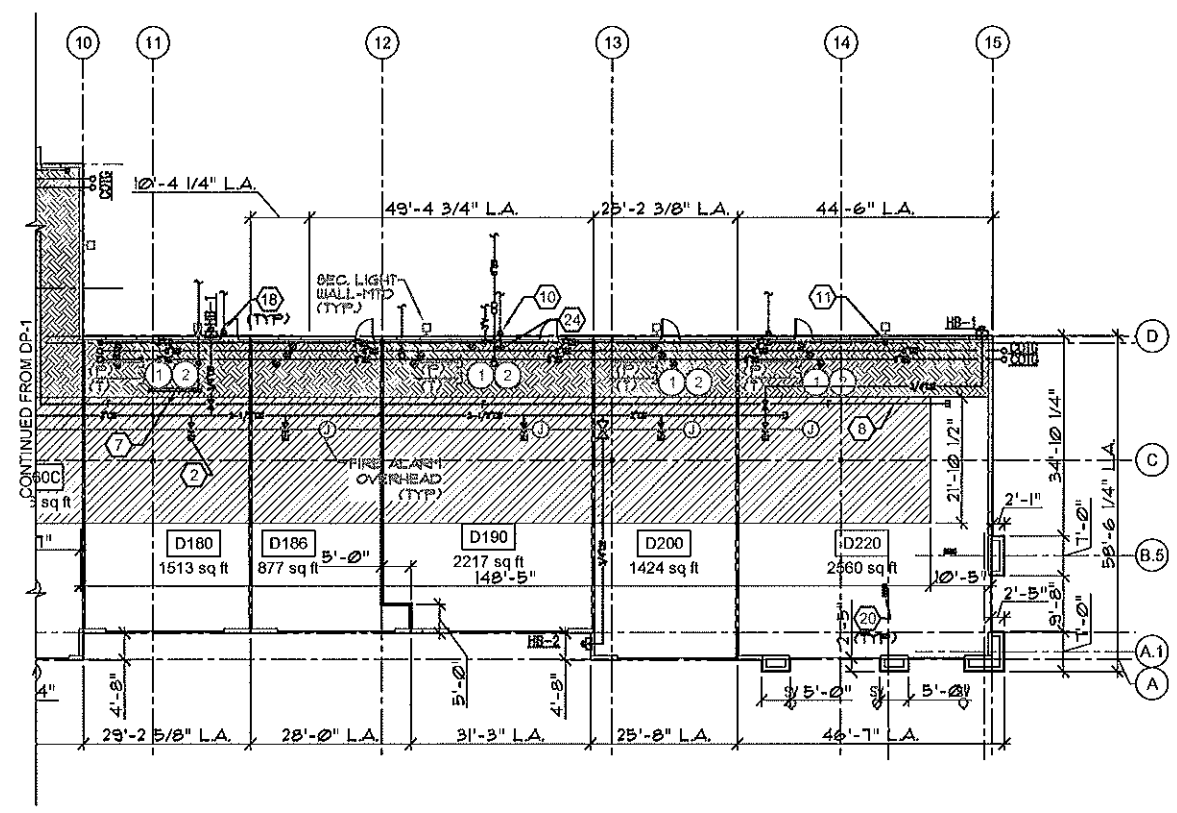
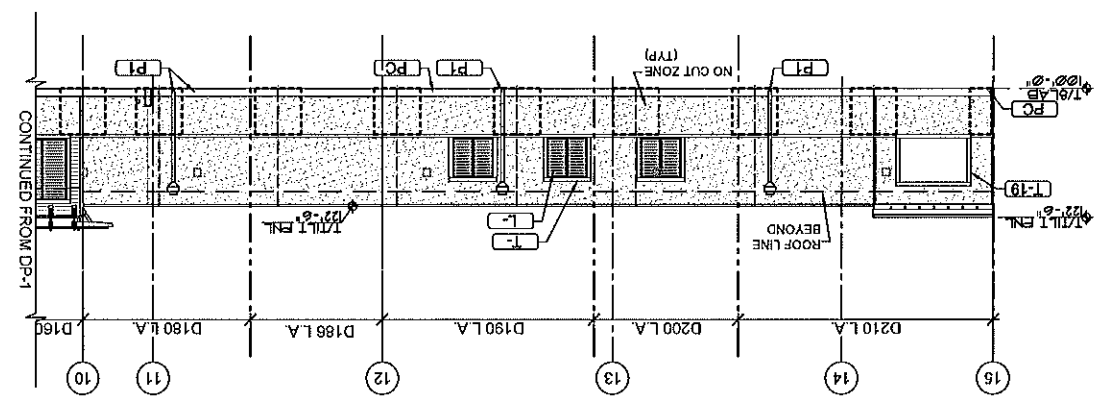
NOTE:
REFER TO DP-3 FOR NOTES
AND LEGENDS.

| REV. | DATE | DESCRIPTION |
|------|------|-------------|
| | | |
| | | |
| | | |

PIER PARK TOWN CENTER
BUILDING "D"
700 PIER PARK DRIVE
PANAMA CITY BEACH, FL 32401

SIMON

| | |
|-------------------|--------------|
| DESIGNED BY: | REVIEWED BY: |
| CKB | SKS |
| CHECKED BY: | APPROVED BY: |
| KLW | KLW |
| REASON FOR ISSUE: | |
| REVIEW | |
| PRINTED: | |
| 10/01/07 | |
| PLOT SCALE: | |
| 1:2 | |
| DRAWING NAME: | |
| DEMISE WALL PLAN | |
| SHEET # | |
| DP-2 | |
| PROJECT # | |
| 070016 | |



2 KEY PLAN
SCALE: NTS

1 BUILDING "D" DEMISE PLAN
SCALE: NTS

NOTE:
REFER TO DP-3 FOR NOTES
AND LEGENDS.

EXTERIOR PAINT LEGEND

| | |
|-----|---|
| P1 | MFR: DUNN EDWARDS COLOR: DE 6177 - THATCHED ROOF |
| P2 | MFR: DUNN EDWARDS COLOR: DE 6176 - CREAMY CAMEO |
| P3 | MFR: DUNN EDWARDS COLOR: DE 5280 - STILL MORNING |
| P4 | MFR: DUNN EDWARDS COLOR: DE 5200 - YAMS |
| P5 | MFR: DUNN EDWARDS COLOR: DE 5277 - RICH HONEY |
| P6 | MFR: DUNN EDWARDS COLOR: DE 5538 - BONSAI |
| P7 | MFR: DUNN EDWARDS COLOR: DE 5536 - DILL GRASS |
| P8 | MFR: DUNN EDWARDS COLOR: DE 5540 - TINTED MINT |
| P9 | MFR: DUNN EDWARDS COLOR: DE 5353 - GOLDEN CREST |
| P10 | MFR: DUNN EDWARDS COLOR: DE 5346 - QUACK QUACK |

EXTERIOR PAINT LEGEND

| | |
|-----|---|
| P11 | MFR: DUNN EDWARDS COLOR: DE 5344 - CREAMED BUTTER |
| P12 | MFR: DUNN EDWARDS COLOR: DE 5900 - ENCHANTING SKY |
| P13 | MFR: DUNN EDWARDS COLOR: DE 5899 - SAPPHIRE FOG |
| P14 | MFR: DUNN EDWARDS COLOR: DE 5898 - PRIM BLUE |
| P15 | MFR: DUNN EDWARDS COLOR: DE 5020 - MAHOGANY CHERRY |
| P16 | MFR: DUNN EDWARDS COLOR: DEA 100 - PUTNAM PLUM |
| P17 | MFR: DUNN EDWARDS COLOR: DE 5019 - ROSEWINE |
| P18 | MFR: DUNN EDWARDS COLOR: DE 6170 - RICE BOWL |
| P19 | MFR: DUNN EDWARDS COLOR: DEW 337 - GARDENIA |
| P20 | MFR: DUNN EDWARDS COLOR: DEW 383 - COOL DECEMBER |

EXTERIOR PAINT LEGEND

| | |
|-----|--|
| P21 | MFR: DUNN EDWARDS COLOR: DE 5915 - CHAMPION BLUE |
| P22 | MFR: DUNN EDWARDS COLOR: DE 5914 - BOSSA NOVA BLUE |
| P23 | MFR: DUNN EDWARDS COLOR: DE 5913 - MIDNIGHT BLUSH |
| P24 | MFR: DUNN EDWARDS COLOR: DE 5479 - HAY DAY |
| P25 | MFR: DUNN EDWARDS COLOR: DE 5478 - BREATH OF SPRING |
| P26 | MFR: DUNN EDWARDS COLOR: DE 5173 - DEEP COLAR |
| P27 | MFR: DUNN EDWARDS COLOR: DE 5172 - LA TERRA |
| P28 | MFR: DUNN EDWARDS COLOR: DE 5171 - OCTOBER HAZE |
| P29 | MFR: DUNN EDWARDS COLOR: DE 5748 - LOCH NESS |
| P30 | MFR: DUNN EDWARDS COLOR: DE 5747 - STONE BRIDGE |

EXTERIOR PAINT LEGEND

| | |
|-----|---|
| P31 | MFR: DUNN EDWARDS COLOR: DE 5746 - ASPEN HUSH |
| P32 | MFR: DUNN EDWARDS COLOR: DE 5745 - BARRER REEF |
| P33 | MFR: DUNN EDWARDS COLOR: DE 5744 - SEA PORT |
| P34 | MFR: DUNN EDWARDS COLOR: DE 5788 - AGEAN SEA |
| P35 | MFR: DUNN EDWARDS COLOR: DE 5787 - PACIFIC PALISADE |
| P36 | MFR: DUNN EDWARDS COLOR: DE 5786 - EASTERN SKY |
| P37 | MFR: DUNN EDWARDS COLOR: DE 5774 - THUNDERCLOUD |
| P38 | MFR: DUNN EDWARDS COLOR: DE 5472 - LUSTROUS YELLOW |
| P39 | MFR: DUNN EDWARDS COLOR: DE 5480 - BABY FROG |
| P40 | MFR: DUNN EDWARDS COLOR: DE 5124 - SOUTHWESTERN CLAY |

EXTERIOR PAINT LEGEND

| | |
|-----|---|
| P41 | MFR: DUNN EDWARDS COLOR: DE 5117 - REDWOOD CITY |
| P42 | MFR: DUNN EDWARDS COLOR: DE 5670 - GROWTH |
| P43 | MFR: DUNN EDWARDS COLOR: DE 5473 - CITRON |
| P44 | MFR: DUNN EDWARDS COLOR: DE 5908 - BELLFLOWER |
| P45 | MFR: DUNN EDWARDS COLOR: DE 6374 - SILVER POLISH |

MECHANICAL NOTES

- DO NOT ROUTE ANY PIPING OVER OR THRU ELECTRICAL ROOM.
- VALVED AND CAPPED 1 1/4" CW STUB-OUT FOR CONNECTION BY TENANT UNLESS NOTED OTHERWISE.
- 4" PLUGGED SS STUB-OUT EXTENDED TO ABOVE GRADE.
- 6" GW STUB-OUT ABOVE GRADE WITHIN LEAVE-OUT SPACE.
- 2" CAPPED CAST IRON NO-HUB CONDENSATE DRAIN STUB-OUT.
- 6" SANITARY SERVICE LINE.
- GAS MAIN LINE UP WALL AND ACROSS ROOF AS SHOWN.
- DESIGNING FIRE PROTECTION CONTRACTOR SHALL DESIGN AND INSTALL SPRINKLER RISER & MAIN PER FIRE PROTECTION SUBNOTE FOR LEASE.
- 6" GREASE WASTE LINE TO AND FROM GREASE INTERCEPTORS.
- 3" CONDENSATE LINE TIE INTO DOWN SPOUT.
- END-OF-LINE FOR CONDENSATE 3" DRAIN PIPE UP THRU ROOF FOR VENTING AND CLEAN OUT PURPOSES.
- 3" VENT LINE FROM GREASE INTERCEPTORS.
- 6" FIRE SPRINKLER SERVICE LINE FROM MAIN.
- 8" FIRE SPRINKLER SERVICE LINE FROM MAIN.
- 2" DOMESTIC WATER SERVICE LINE FROM MAIN.
- 2 - 1/2" DOMESTIC WATER SERVICE LINE FROM MAIN.
- 3" DOMESTIC WATER SERVICE LINE FROM MAIN.
- 6" STORM DRAIN LINE WITH 1" AIR GAP.
- 8" STORM DRAIN LINE WITH 1" AIR GAP.
- 24X24 LOUVER IN WALL OF UPPER LEVEL ATTIC WALLS FOR ATTIC VENTILATION.
- 6" GREASE WASTE.
- DEDICATED 3" DOMESTIC WATER ENTRY LINE FROM 3" METER FOR RESTAURANT TENANT.
- DEDICATED 6" GW STUBBED 5'-0" INTO TENANT SPACE WITH TWCO. AND 4" VTR.
- 3" HORIZONTAL CLEANOUT FOR CONDENSATE LINE.
- 6" SD DOWN AT COLUMN. CLEAN-OUT ABOVE FINISHED FLOOR.

ELECTRICAL NOTES

- 1" EMPTY CONDUIT STUBBED INTO TENANT SPACE FROM TELEPHONE BOARD IN LANDLORD ELECTRICAL ROOM 152.
- 2" EMPTY CONDUIT STUBBED INTO TENANT SPACE FROM LANDLORD ELECTRICAL SERVICE AT REAR OF BUILDING.
- LANDLORD ELECTRICAL TROUGH.
- 1" CONDUIT FROM FIRE ALARM EQUIPMENT IN MALL OFFICE IN BUILDING E.
- EXTERIOR MAIN DISCONNECT.

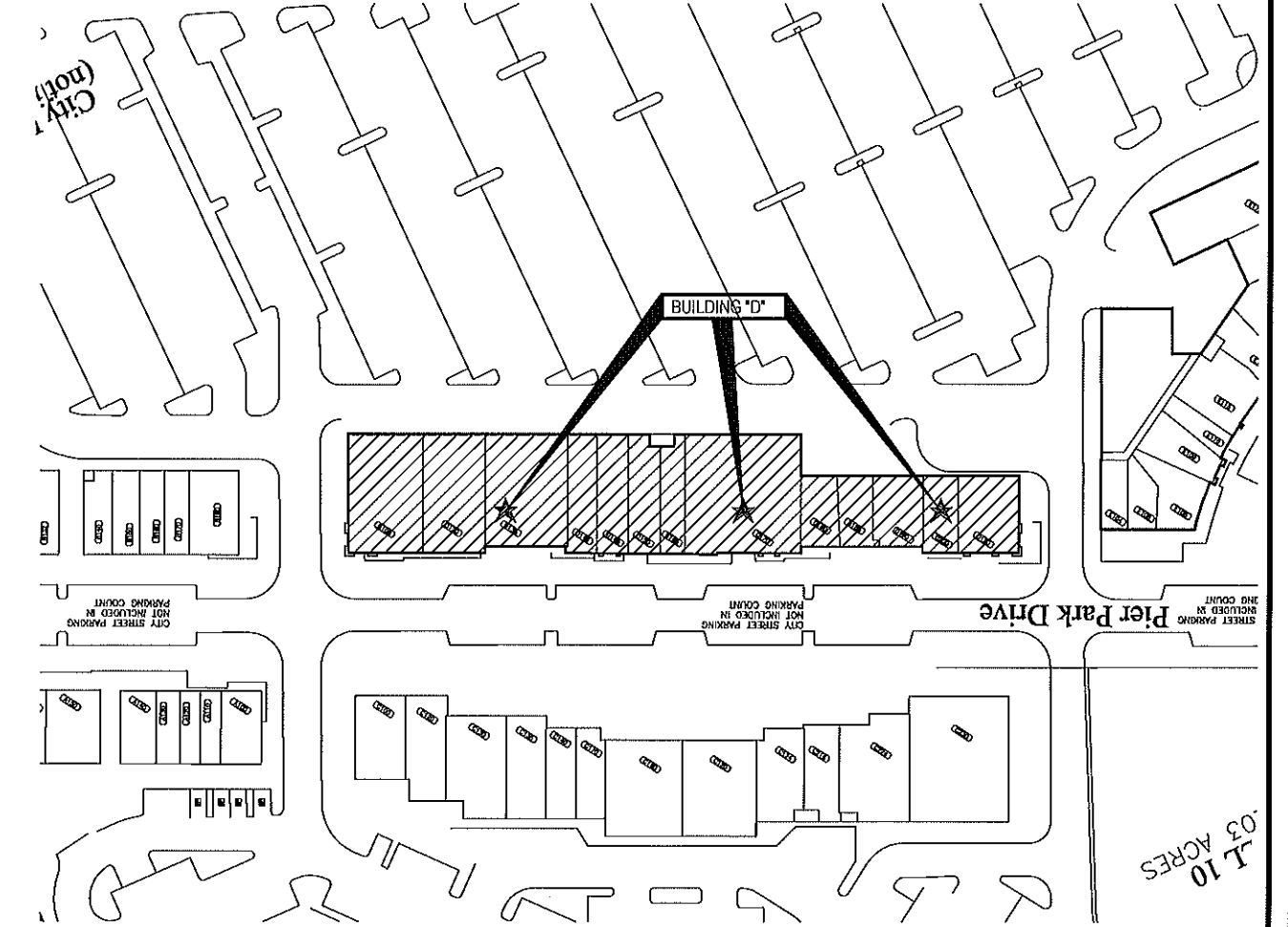
DEMISE PLAN & ELEVATION LEGEND

| | |
|---------------------------------------|--|
| MECHANICAL | PREDESIGNED RTU STRUCTURAL LOAD ZONE ON ROOF |
| ELECTRICAL FIRE ALARM TELEPHONE | CONCRETE LEAVEOUT |
| PLUMBING SPRINKLERS | TENANT TENANT SIGN BAND HATCH |
| ARCHITECTURAL | REFER TO EXTERIOR LEGEND |
| L.A. = LEASE AREA | REFER TO EXTERIOR PAINT LEGEND |

EXTERIOR LEGEND

| | |
|----|---|
| E | E.I.F.S. |
| M | METAL COPING |
| PC | PRECAST STONE |
| S | FIBER CEMENT SIDING HARDPLANK SIDING |
| T | TRIM |
| C | CONCRETE BLOCK |
| L | PREFAB/PREFIN. DECO ALUMINUM LOUVER/ SHUTTER |
| CS | LITHOCHROME TINTURA STAIN CONCRETE WALL STAIN |
| R | ROOFING |
| LS | LOUVER/ SHUTTER |
| WD | WOOD |
| SW | STUCCO WALL SYSTEM |

PLEASE MAKE NOTE THAT DURING THE COURSE OF FABRICATION OF THE SHELL BUILDING TILT WALL PANELS A CONCRETE RELEASING AGENT IS APPLIED TO THE BUILDING SLAB. THIS AGENT MAY AFFECT THE ADHESION OF FINISH FLOOR MATERIAL. GLUES, MASTICS AND MORTARS. THIS AGENT MAY ALSO AFFECT THE COLOR OF CONCRETE STAINS IF YOU CHOOSE TO STAIN THE CONCRETE AS YOUR FINISH.



KEY PLAN
SCALE: NTS

| REV. | DATE | DESCRIPTION |
|------|------|-------------|
| | | |
| | | |
| | | |

PIER PARK TOWN CENTER
BUILDING "D"
700 PIER PARK DRIVE
PANAMA CITY BEACH, FL 32401

SIMON

| | |
|-------------------------------|------------------|
| DESIGNED BY: SKS | REVIEWED BY: CJB |
| CHECKED BY: KLW | APPROVED BY: KLW |
| REASON FOR ISSUE: REVIEW | |
| PRINTED: 10/01/07 | |
| PLOT SCALE: 1:2 | |
| DRAWING NAME: NOTES & LEGENDS | |
| SHEET # DP-3 | |
| PROJECT # 070016 | |