

BULLETIN

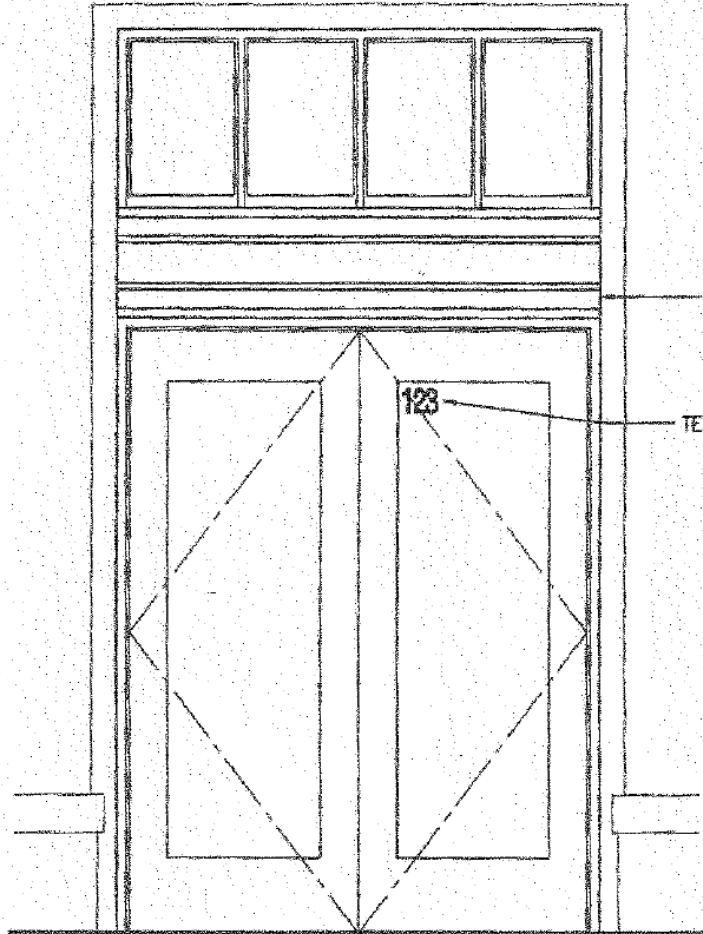
Storefront Numbering/Rear Door Requirements

Storefront Door– (see drawing #1 attached)
4" Helvetica font style
Vinyl Letters
Color – White

Exterior Rear Door – (see drawing #2 attached)
4" Helvetica font style
Vinyl Letters
Color – Black

Corridor Door – (see drawing #3 attached)
Store name and Suite # Only
4" Helvetica font style
Vinyl Letters
Color - Black

For placements, refer to detail sheets which are attached hereto. In addition, Tenants are required to install an 8" x 8" Tenant ID sign. See attached sketch for more detail.



FENESTRATION AND MULLION PATTERNS WILL VARY BY FACADE

TEXT:
4" TEXT HEIGHT
HELVETICA FONT STYLE
1/2" MIN. KEYSTROKE WIDTH
COLOR TO BE WHITE

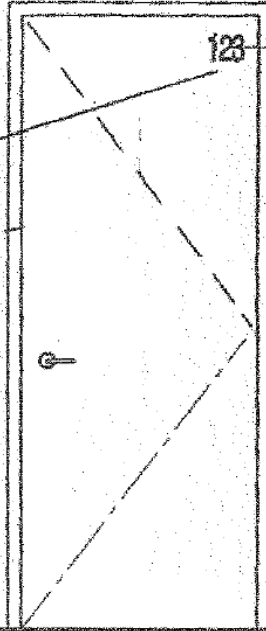
HAMILTON TC - FRONT DOOR ELEVATION

DRAWING #1

Hamilton Town Center
Noblesville, IN

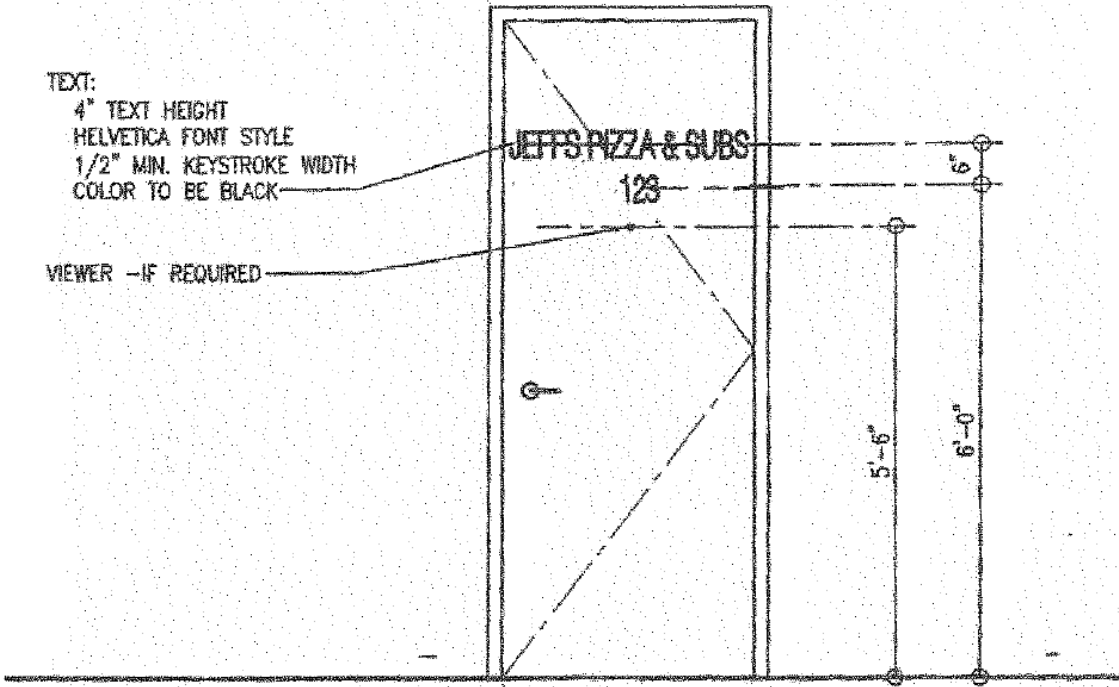
TEXT:
4" TEXT HEIGHT
HELVETICA FONT STYLE
1/2" MIN. KEYSTROKE WIDTH
COLOR TO BE BLACK

TEXT TO BE PLACED ON
THE TOP RIGHT
3" FROM TOP AND SIDE
EDGE OF THE DOOR



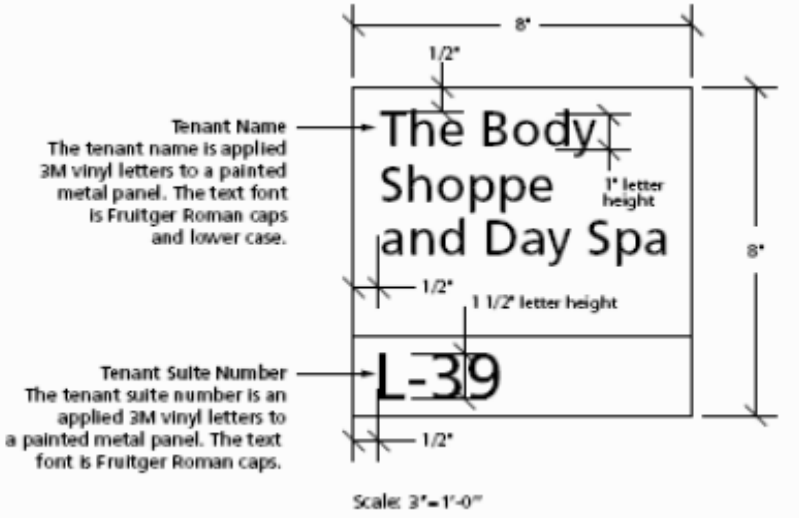
HAMILTON TC - EXTERIOR DOOR ELEVATION

DRAWING #2



HAMILTON TC - CORRIDOR DOOR ELEVATION

DRAWING #3



NOTE:
THE ELEMENTS ILLUSTRATED ARE TO BE INSTALLED BY THE LANDLORD ON BEHALF OF THE TENANT AT TENANT EXPENSE.

