

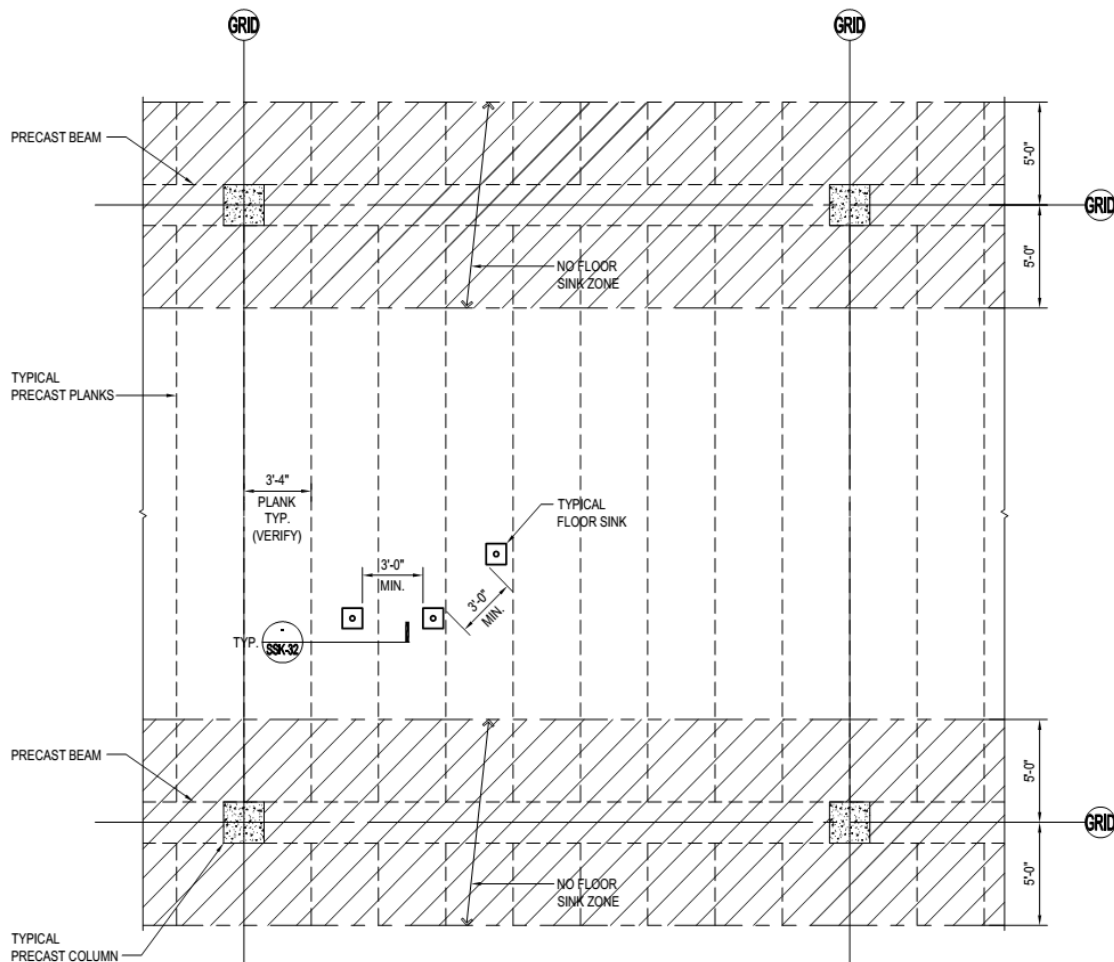
# BULLETIN

## Food Court – Floor Drains

(9/23/13)

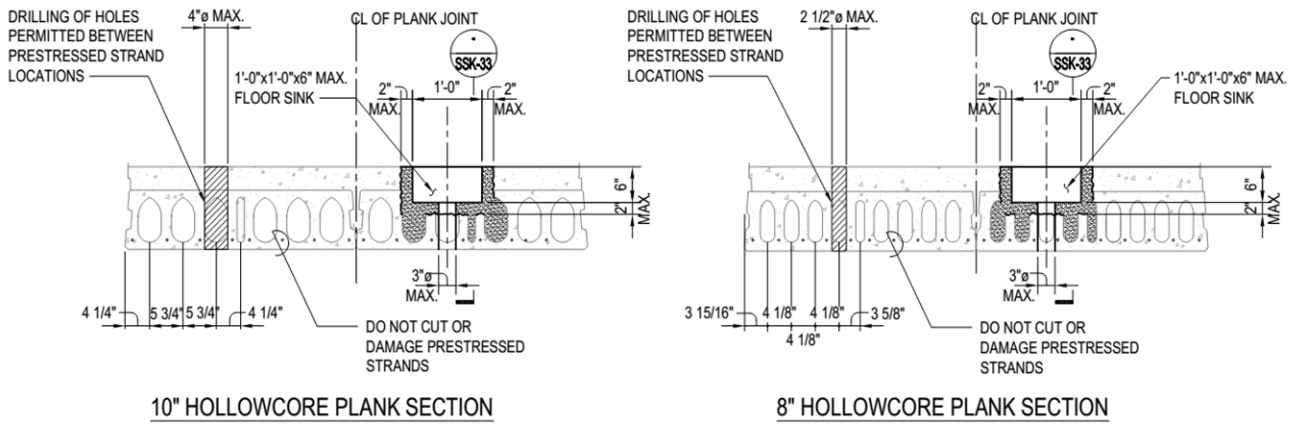
- The Tenant structural engineer must review Tenant's proposed placement of all floor drains for compliance to Landlord structural criteria.
- Tenant may have to modify floor drain placement / type to comply.
- If Tenant violates criteria and cannot change design / placement, Tenant structural engineer must provide reinforcement / design / calculations to slab showing cure to meet criteria.
- Tenant to provide stamped / structural engineer sealed plumbing drawing showing compliance to criteria to Landlord for review and to building department.
- Plumbing inspector will not issue permit without verification plumbing plans have been reviewed, have met criteria and are sealed.

### FLOOR SINK IN PRECAST PLANK PLAN



Del Amo Fashion Center  
Torrance, CA

# HOLE THRU HOLLOW CORE PLANK DETAILS



NOTES:  
 1. CONTRACTOR MAY USE A PACHOMETER TO LOCATE EXISTING STRANDS AT THE BOTTOM OF THE HOLLOWCORE PLANKS. DO NOT DRILL CLOSER THAN 1 1/2" CLEAR FROM A LOCATED STRAND.

# HOLES THRU HOLLOW CORE PLANK DETAIL

