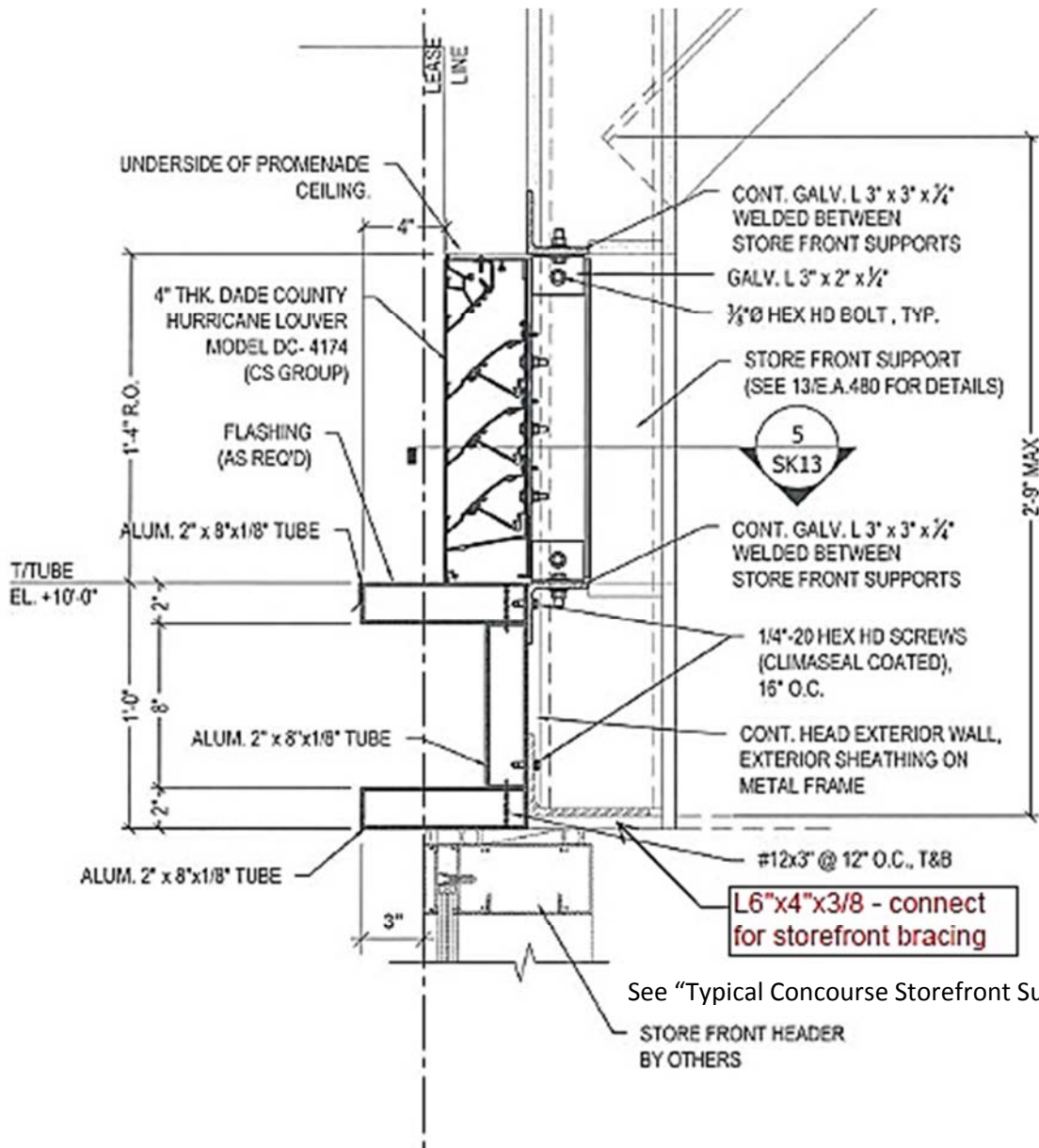


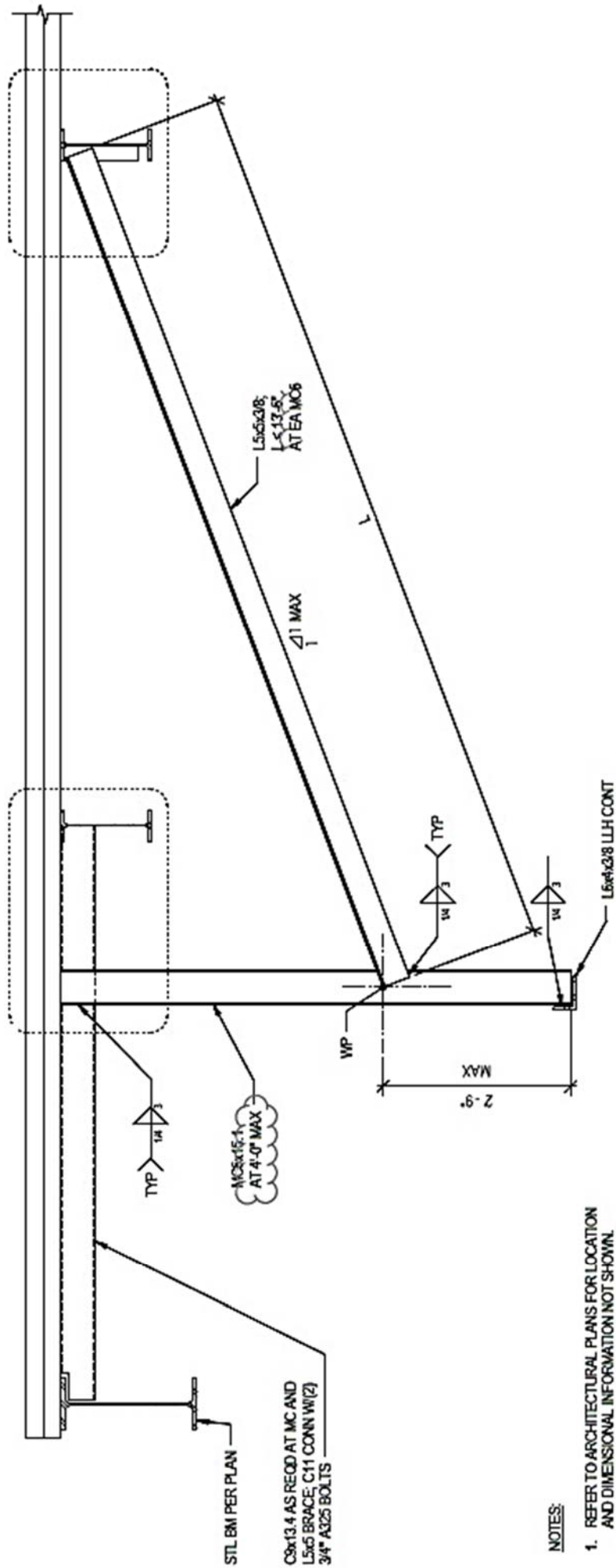
# Storefront Structural Support

Brickell City Centre

NOTE: The conceptual details of the Landlord's Neutral Pier / Header and storefront structural support as shown in the Brickell City Centre (BCC) Tenant Design Manual are now defined under actual as-built conditions, and are shown below. Field verification of the as-built condition is critical for Tenant's and their design team. Tenant's architect / structural engineer should take note of these details and revise Tenant's storefront structural support design as necessary. Tenant's structural engineer is required to design the connection at the header and bottom curb. Header connection can contain drilled-in fasteners or welds as long as Tenant's Structural Engineer approves. As stated above, Tenant's and their consultants should verify existing conditions in the field.



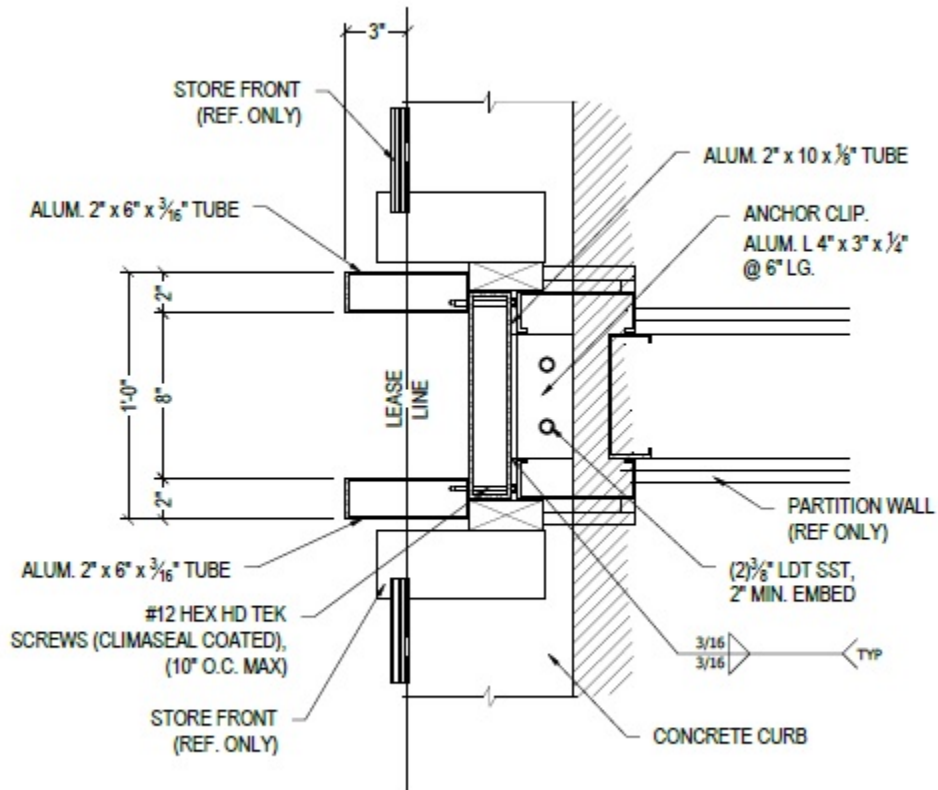
Section - Neutral Header at Storefront



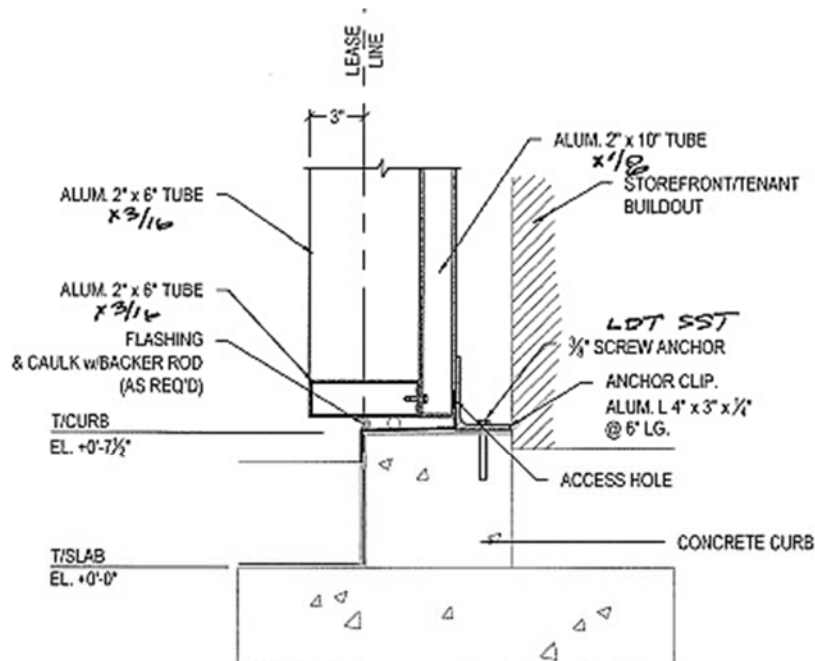
**NOTES:**

1. REFER TO ARCHITECTURAL PLANS FOR LOCATION AND DIMENSIONAL INFORMATION NOT SHOWN.
2. CONNECTION CONDITIONS TO PRIMARY STRUCTURE VARIES. CONTRACTOR TO COORDINATE.

**TYPICAL CONCOURSE STOREFRONT SUPPORT DETAIL**



Section - Jamb at Neutral Pier



Section - Concrete Curb at Storefront