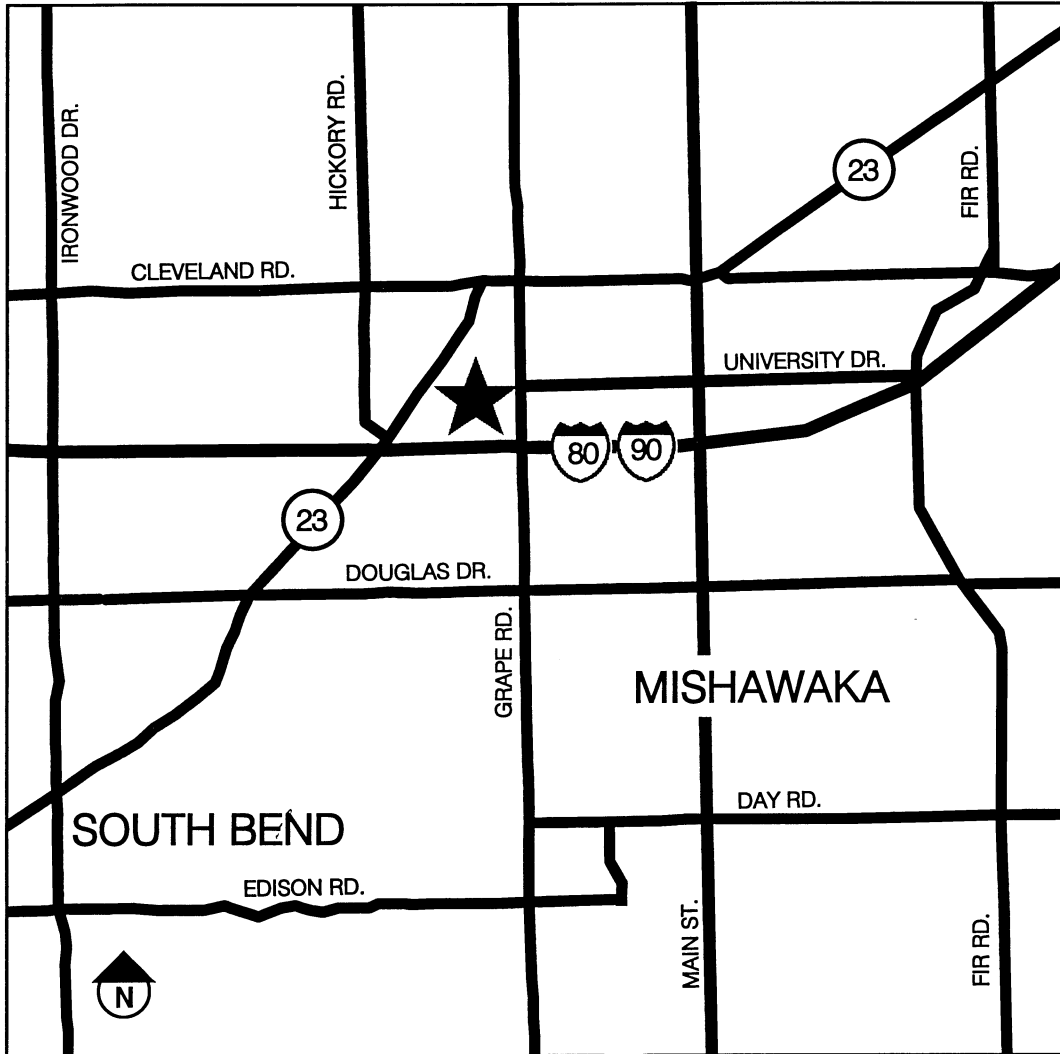


# MAP



UNIVERSITY PARK MALL, Mishawaka, IN

## PROJECT ADDRESS

Corporate #: 9710  
**University Park Mall**  
6501 N. Grape Road  
Mishawaka, IN 46545

Telephone: 574/271-5531  
Fax: 574/272-5924

## LANDLORD'S ADDRESS

Simon Property Group  
National City Center  
115 West Washington Street  
Indianapolis, IN 46204-3464  
or  
P.O. Box 7033  
Indianapolis, IN 46207-7033

### Tenant Coordination Department:

Telephone: 317/636-1600  
Fax: 317/685-7222

**Internet Address:** [Tenantcoor@simon.com](mailto:Tenantcoor@simon.com)

### Leasing Department:

Telephone: 317/636-1600

## PROJECT RESOURCES

### **BUILDING PERMITS**

City of Mishawaka Building Department  
600 East 3rd Street  
Mishawaka, IN 46544

Telephone: 574/258-1607

### **FIRE DEPARTMENT**

Mishawaka Fire Department  
333 E. Douglas Road  
Mishawaka, IN 46544

Telephone: 574/247-0928

### **HEALTH DEPARTMENT**

City of Mishawaka Building Department  
600 East 3rd Street  
Mishawaka, IN 46544

Telephone: 574/253-9750

### **ELECTRIC SERVICE**

Mishawaka Utilities  
126 North Church  
Mishawaka, IN 46545

Telephone: 574/258-1630

\*Utility Contractor is the same as Electric Service Contractor.

### **WATER SERVICE\***

### **SEWER SERVICE\***

Telephone: 574/258-1709

### **GAS SERVICE**

Nipsco  
307 North Michigan  
South Bend, IN 46601

Telephone: 800/422-6199

### **TELEPHONE SERVICE**

Ameritech  
220 N. Meridian Street  
Indianapolis, IN 46204

Telephone: 800/257-0902

## LANDLORD DESIGNATED CONTRACTORS

### ROOF CONTRACTOR

Rock Solid Maintenance  
10475 Brummitt Road  
Granger, IN 46530

Telephone: 574/675-9390

### SPRINKLER CONTRACTOR

McDaniels Fire Systems  
1055 Joliet Road  
Valparaiso, IN 46385

Telephone: 219/465-6168

### TRASH REMOVAL CONTRACTOR

BFI  
57820 Charlotte Avenue  
Elkhart, IN 46517

Contact: Tina Liles

Telephone: 800/888-5783 Ext. 22  
Fax: 574/295-7043

### BARRICADE CONTRACTOR

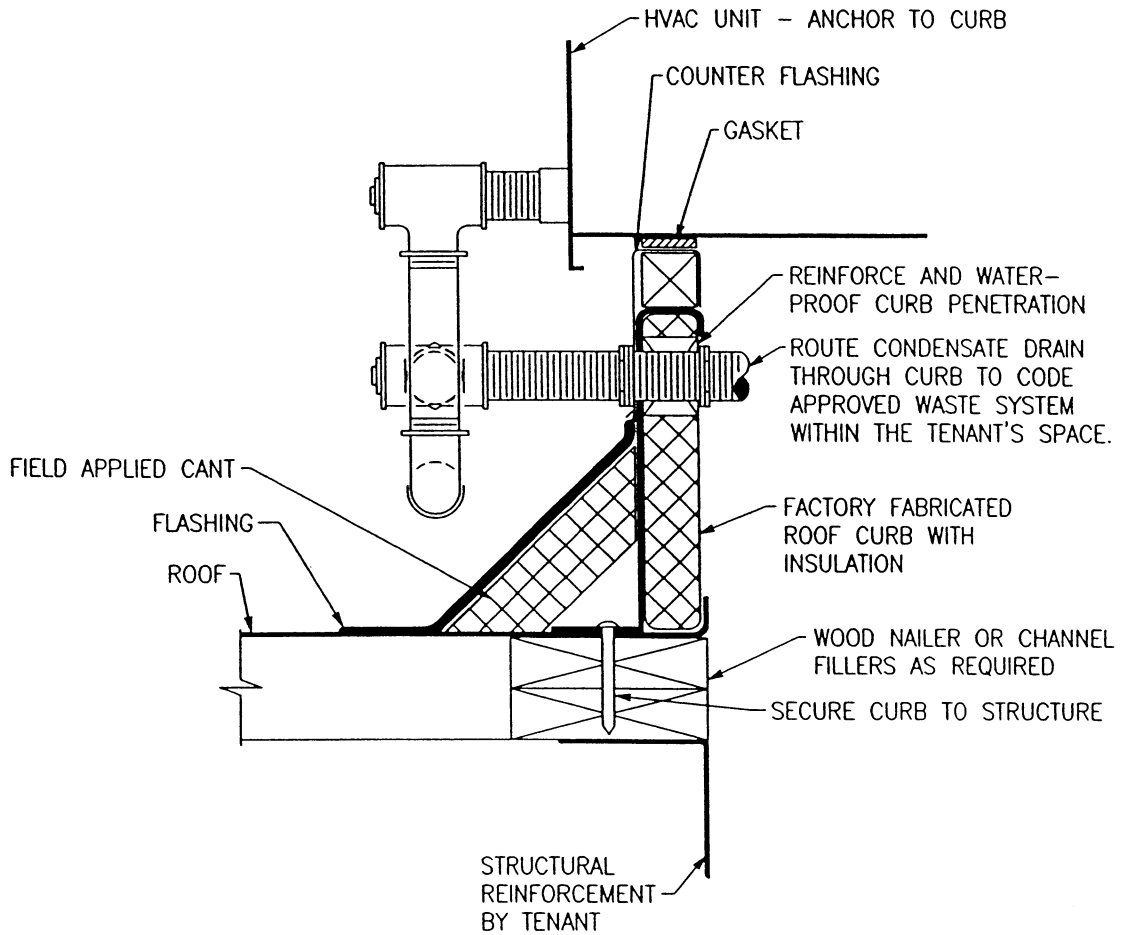
Varsity Contractors, Inc.  
6501 N. Grape Road  
Mishawaka, IN 46545

Contact: Bob Webb

Telephone: 574/271-5531  
Fax: 574/272-5924

Note: Verify Landlord Designated Contractors with Mall Management.

# DETAILS

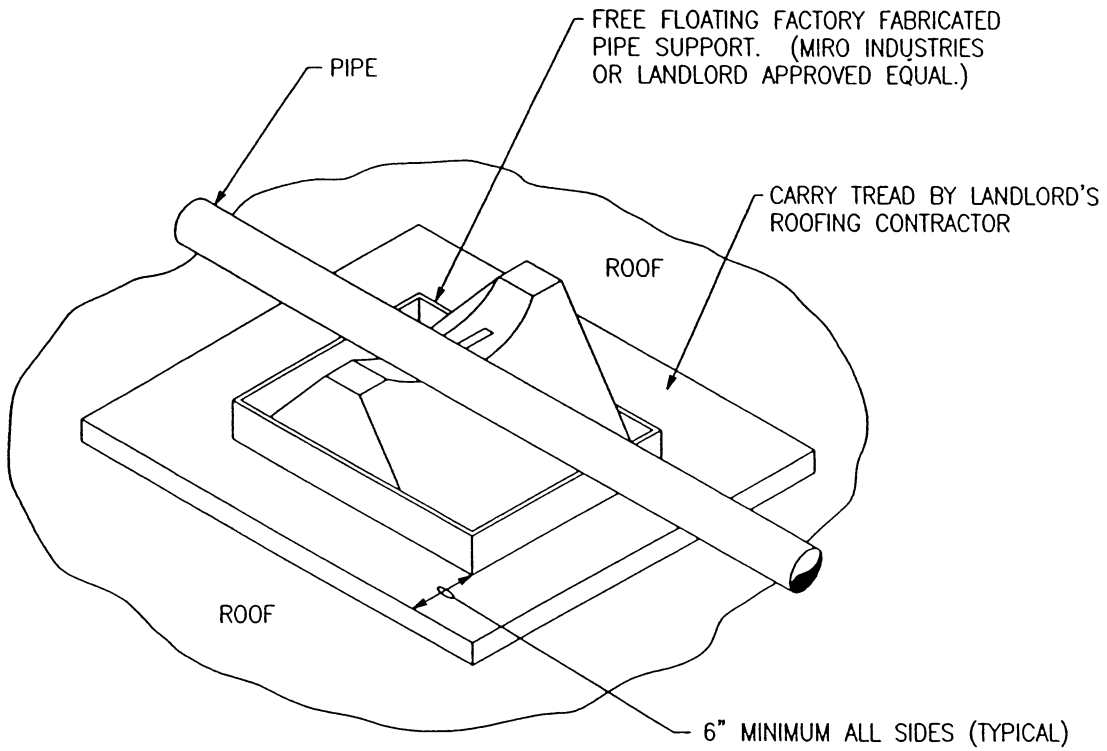


## NOTES:

1. ADAPT DESIGN CONCEPTS IN THIS DETAIL TO THE SPECIFIC CONSTRUCTION ASSEMBLIES UTILIZED AT THIS PROJECT.
2. CURBS SHALL BE FACTORY FABRICATED WITH INSULATION AND EXTEND A MINIMUM OF 12" ABOVE THE HIGH POINT OF THE ROOF.
3. INSTALL ELECTRICAL CONDUIT SIMILAR TO CONDENSATE DRAIN.
4. ROOF EQUIPMENT CURBS MUST BE PROVIDED WITH PROPERLY DESIGNED FABRICATED LEVELING DEVICES, SO THE EQUIPMENT IS LEVEL AND CURB INSTALLATION MATCHES THE ROOF SLOPE.
5. PROVIDE STRUCTURAL REINFORCEMENT FOR EQUIPMENT SUPPORT AND DECK OPENING. MINIMUM SUPPORT SIZE SHALL BE 3"X3"X5/16".
6. CURB SHALL NOT REST ON ROOF INSULATION.
7. ALL ROOFING WORK SHALL BE PERFORMED BY THE LANDLORD DESIGNATED ROOFING CONTRACTOR.
8. RESLOPE ROOFING TO PROVIDE ADEQUATE DRAINAGE.

**FULL PERIMETER CURB DETAIL**  
DTL14.DWG 06/26/98

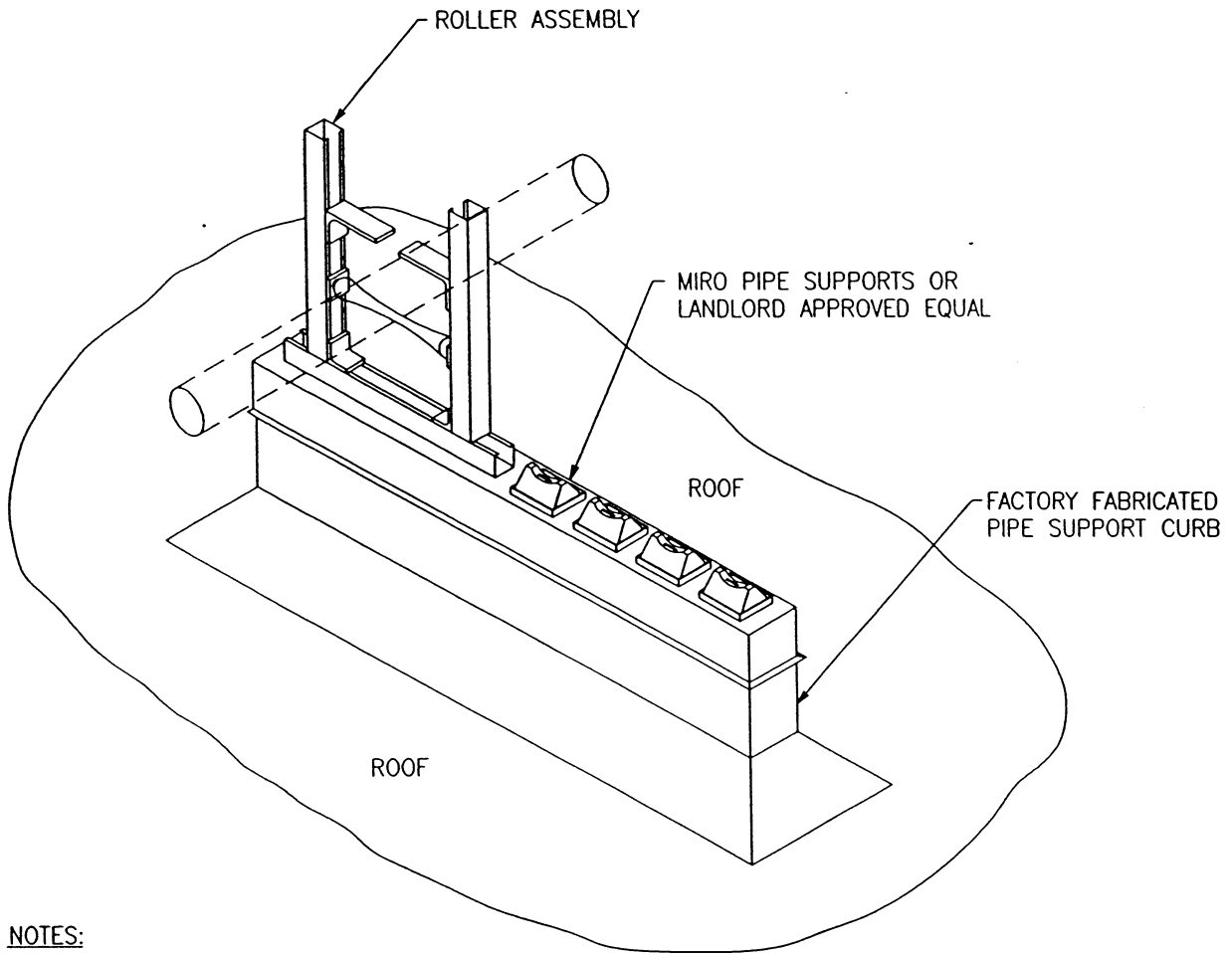
# DETAILS



NOTES:

1. USE FACTORY FABRICATED PIPE SUPPORT AND ROLLER ASSEMBLY WHERE CODE WILL NOT PERMIT FREE FLOATING SUPPORTS.

**FREE FLOATING PIPE SUPPORT DETAIL**  
DTL32.DWG 06/26/98



**NOTES:**

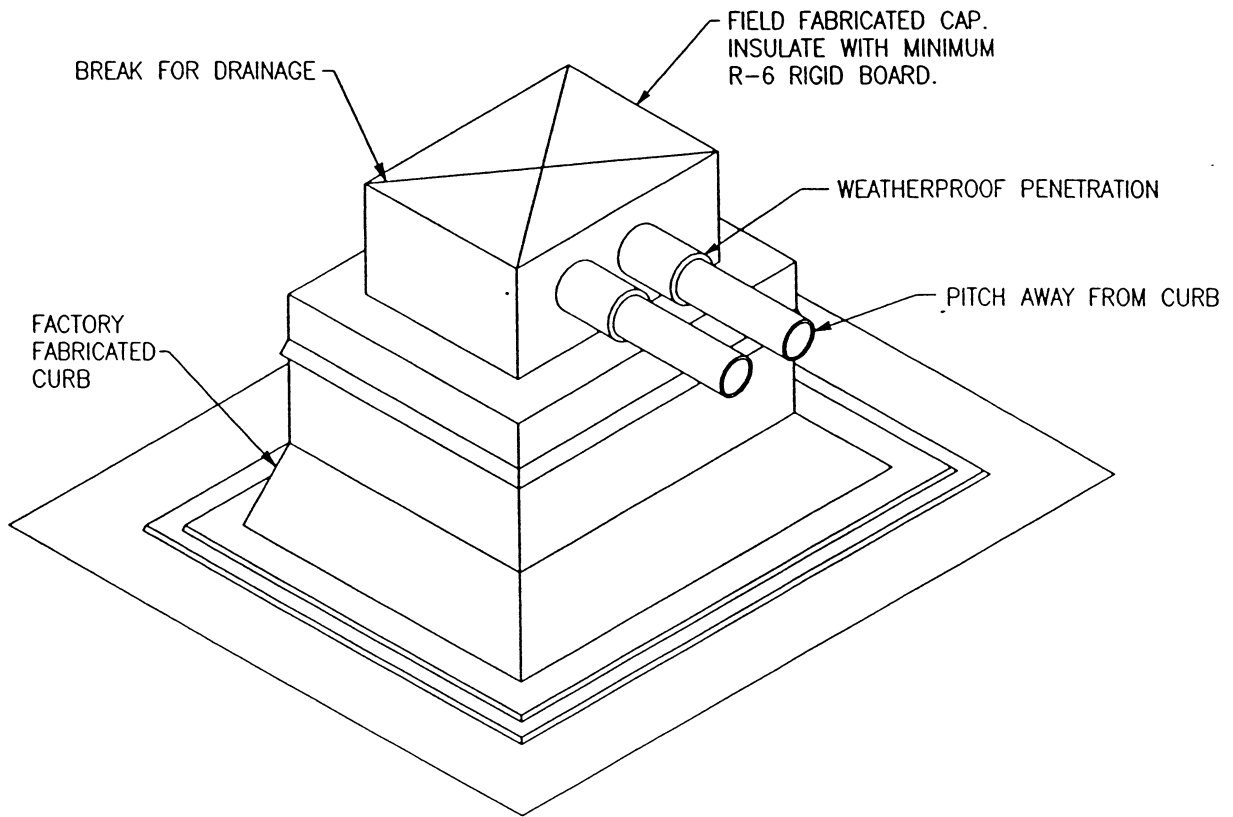
1. ADAPT DESIGN CONCEPTS IN THIS DETAIL TO THE SPECIFIC CONSTRUCTION ASSEMBLIES UTILIZED AT THIS PROJECT.
2. CURBS SHALL BE FACTORY FABRICATED WITH INSULATION AND EXTEND A MINIMUM OF 12" ABOVE THE HIGH POINT OF THE ROOF.
3. ROOF EQUIPMENT CURBS MUST BE PROVIDED WITH PROPERLY DESIGNED FABRICATED LEVELING DEVICES, SO THE EQUIPMENT IS LEVEL AND CURB INSTALLATION MATCHES THE ROOF SLOPE.
4. PROVIDE STRUCTURAL REINFORCING WHERE REQUIRED TO ACCOMMODATE LOAD. (MINIMUM SUPPORT SIZE SHALL BE 3"x3"x5/16".)
5. CURB SHALL NOT REST ON ROOF INSULATION.
6. ALL ROOFING WORK SHALL BE PERFORMED BY THE LANDLORD DESIGNATED ROOFING CONTRACTOR.
7. RESLOPE ROOFING TO PROVIDE ADEQUATE DRAINAGE.

## PIPE ROLLER SUPPORT DETAIL

DTL33.DWG

06/26/98

# DETAILS



## NOTES:

1. ADAPT DESIGN CONCEPTS IN THIS DETAIL TO THE SPECIFIC CONSTRUCTION ASSEMBLIES UTILIZED AT THIS PROJECT.
2. CURBS SHALL BE FACTORY FABRICATED WITH INSULATION AND EXTEND A MINIMUM OF 12" ABOVE THE HIGH POINT OF THE ROOF.
3. ROOF EQUIPMENT CURBS MUST BE PROVIDED WITH PROPERLY DESIGNED FABRICATED LEVELING DEVICES, SO THE EQUIPMENT IS LEVEL AND CURB INSTALLATION MATCHES THE ROOF SLOPE.
4. PROVIDE STRUCTURAL REINFORCING WHERE REQUIRED TO ACCOMMODATE LOAD. (MINIMUM SUPPORT SIZE SHALL BE 3"x3"x5/16".)
5. CURB SHALL NOT REST ON ROOF INSULATION.
6. ALL ROOFING WORK SHALL BE PERFORMED BY THE LANDLORD DESIGNATED ROOFING CONTRACTOR.
7. RESLOPE ROOFING TO PROVIDE ADEQUATE DRAINAGE.

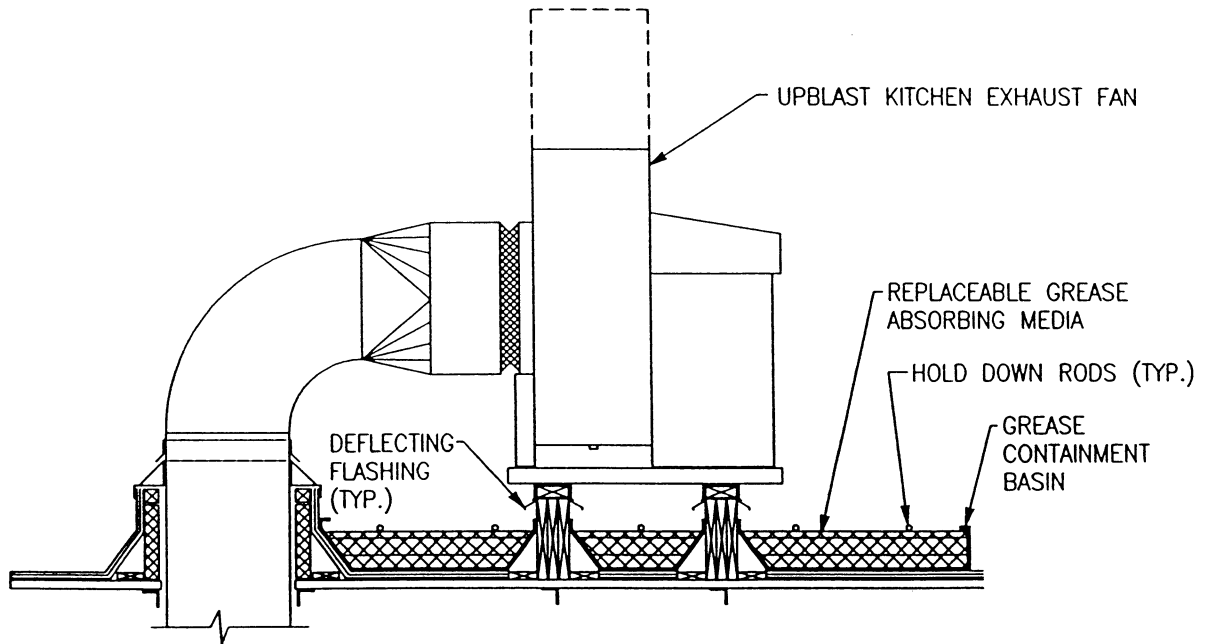
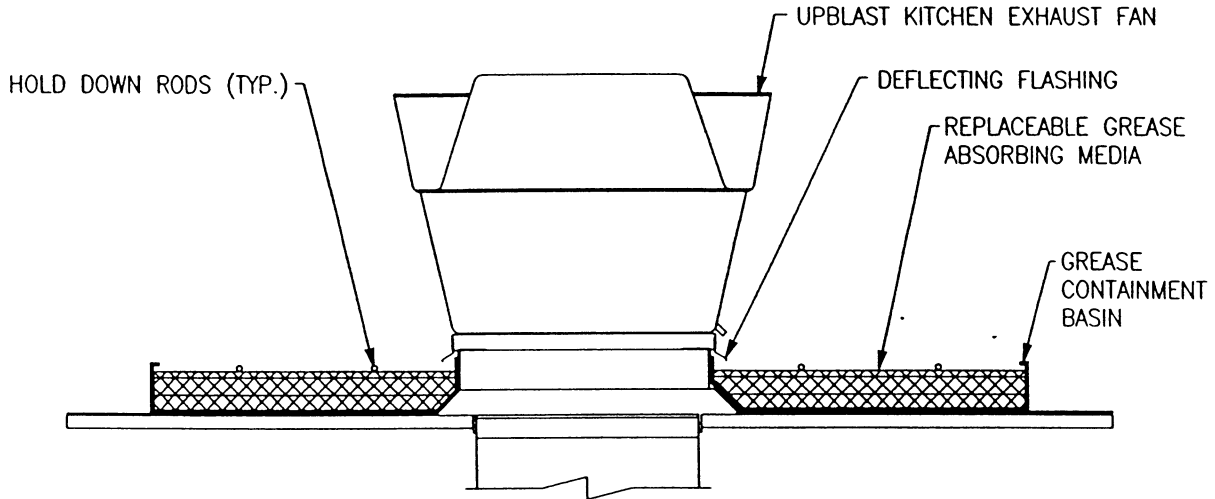
## PIPE CHASE DETAIL

DTL34.DWG

06/26/98



# DETAILS



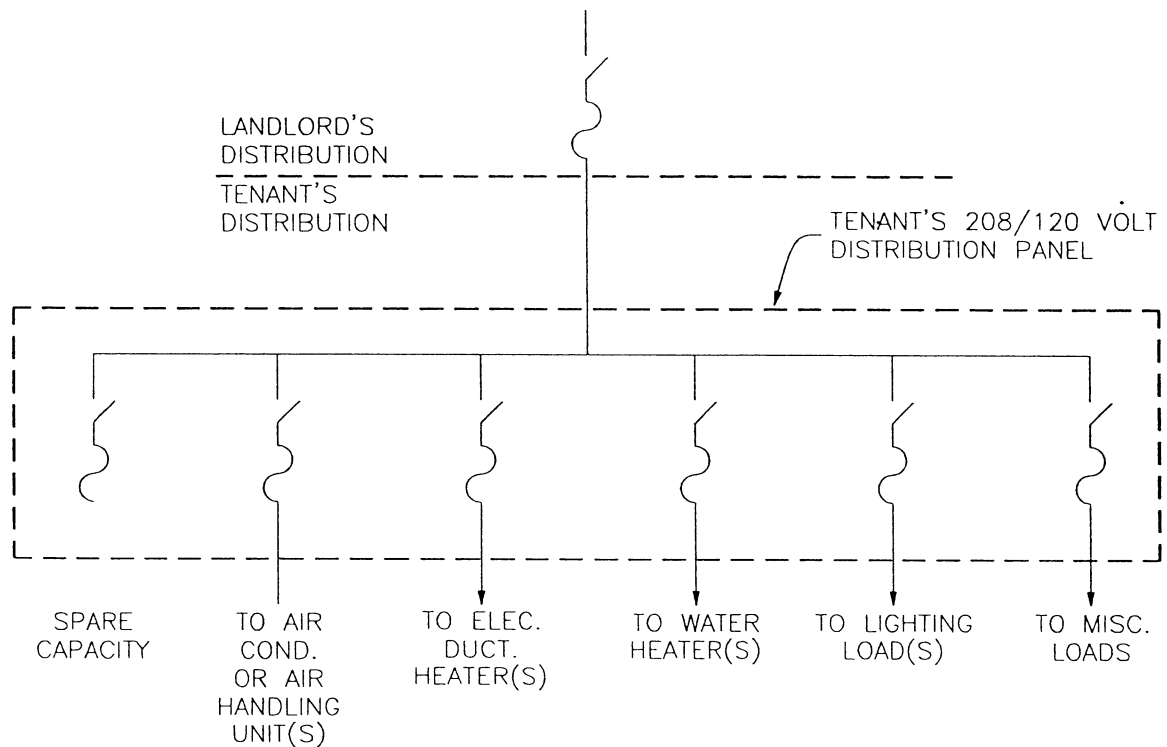
## NOTES:

1. A GREASE GUARD GREASE CONTAINMENT SYSTEM SHALL BE INSTALLED FOR ALL KITCHEN EXHAUST SYSTEMS.
2. MINIMUM GREASE RECEPTOR SYSTEM PAD SIZE SHALL BE CALCULATED BY MULTIPLYING THE SIZE OF THE ROOF CURB BY A FACTOR OF TWO (2) AND ROUNDING UP TO THE NEAREST ONE (1) FOOT INTERVAL. MINIMUM SIZE SHALL NOT BE LESS THAN 48"X48".

## GREASE CONTAINMENT SYSTEM DETAIL

DTL16.DWG

06/26/98



NOTES:

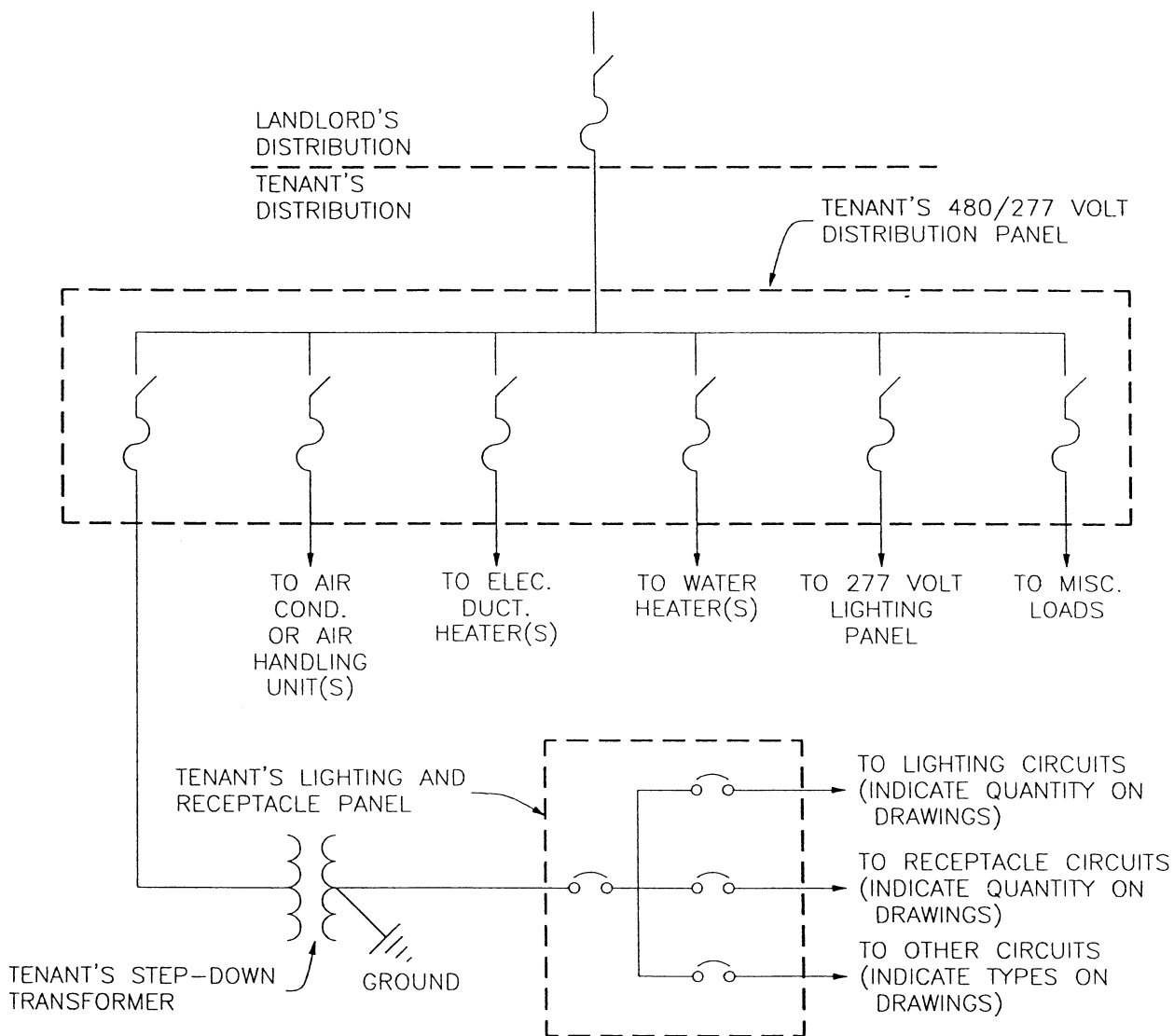
1. INDICATE ALL WIRE, CONDUIT AND GROUND SIZES ON TENANT'S DRAWINGS.
2. INDICATE ALL SWITCH AND FUSE SIZES ON TENANT'S DRAWINGS.
3. INDICATE IF DISTRIBUTION IS COMPOSED OF TROUGH AND FUSED SWITCHES ON TENANT'S DRAWINGS.
4. INDICATE IF REQUIRED SWITCH OR CONDUIT EXCEEDS SIZE INDICATED IN LEASE ON TENANT'S DRAWINGS.
5. CONDUIT ONLY WILL BE PROVIDED BY THE LANDLORD TO A POINT WITHIN THE TENANT'S SPACE, NOT NECESSARILY TO THE TENANT'S DISTRIBUTION PANEL.
6. UTILIZE ONE MAIN SWITCH OR NOT MORE THAN SIX (6) MAIN DISCONNECTING MEANS AS PER CODE.

## TENANTS 208/120 VOLT ONE-LINE DIAGRAM

DTL22b.DWG

12/2/98

# DETAILS



## NOTES:

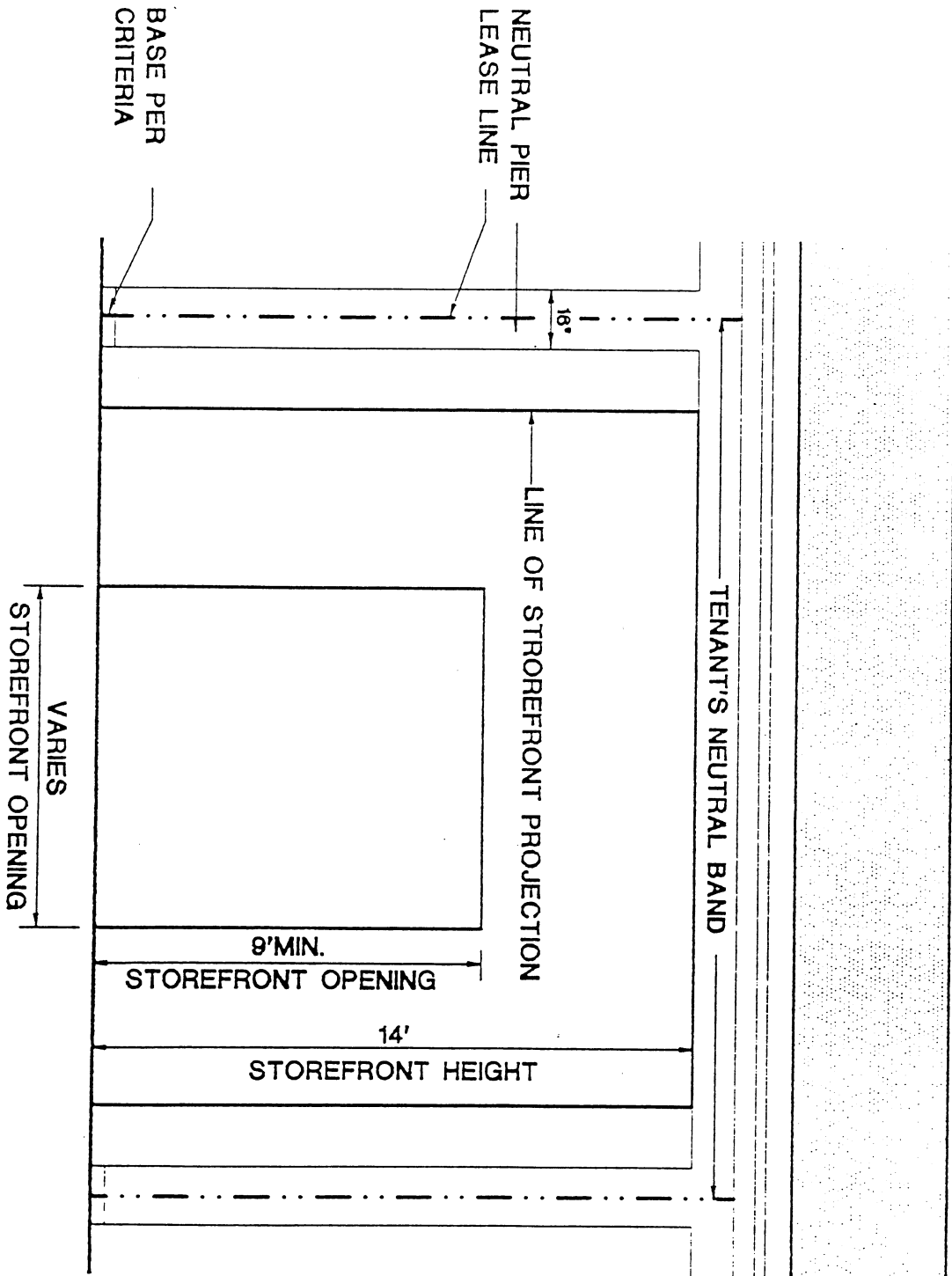
1. INDICATE ALL WIRE, CONDUIT AND GROUND SIZES ON TENANT'S DRAWINGS.
2. INDICATE ALL SWITCH AND FUSE SIZES ON TENANT'S DRAWINGS.
3. INDICATE IF DISTRIBUTION IS COMPOSED OF TROUGH AND FUSED SWITCHES ON TENANT'S DRAWINGS.
4. INDICATE IF REQUIRED SWITCH OR CONDUIT EXCEEDS SIZE INDICATED IN LEASE ON TENANT'S DRAWINGS.
5. CONDUIT ONLY WILL BE PROVIDED BY THE LANDLORD TO A POINT WITHIN THE TENANT'S SPACE, NOT NECESSARILY TO THE TENANT'S DISTRIBUTION PANEL.
6. UTILIZE ONE MAIN SWITCH OR NOT MORE THAN SIX (6) MAIN DISCONNECTING MEANS AS PER CODE.

## TENANTS 480/277 VOLT ONE-LINE DIAGRAM

DTL22a.DWG

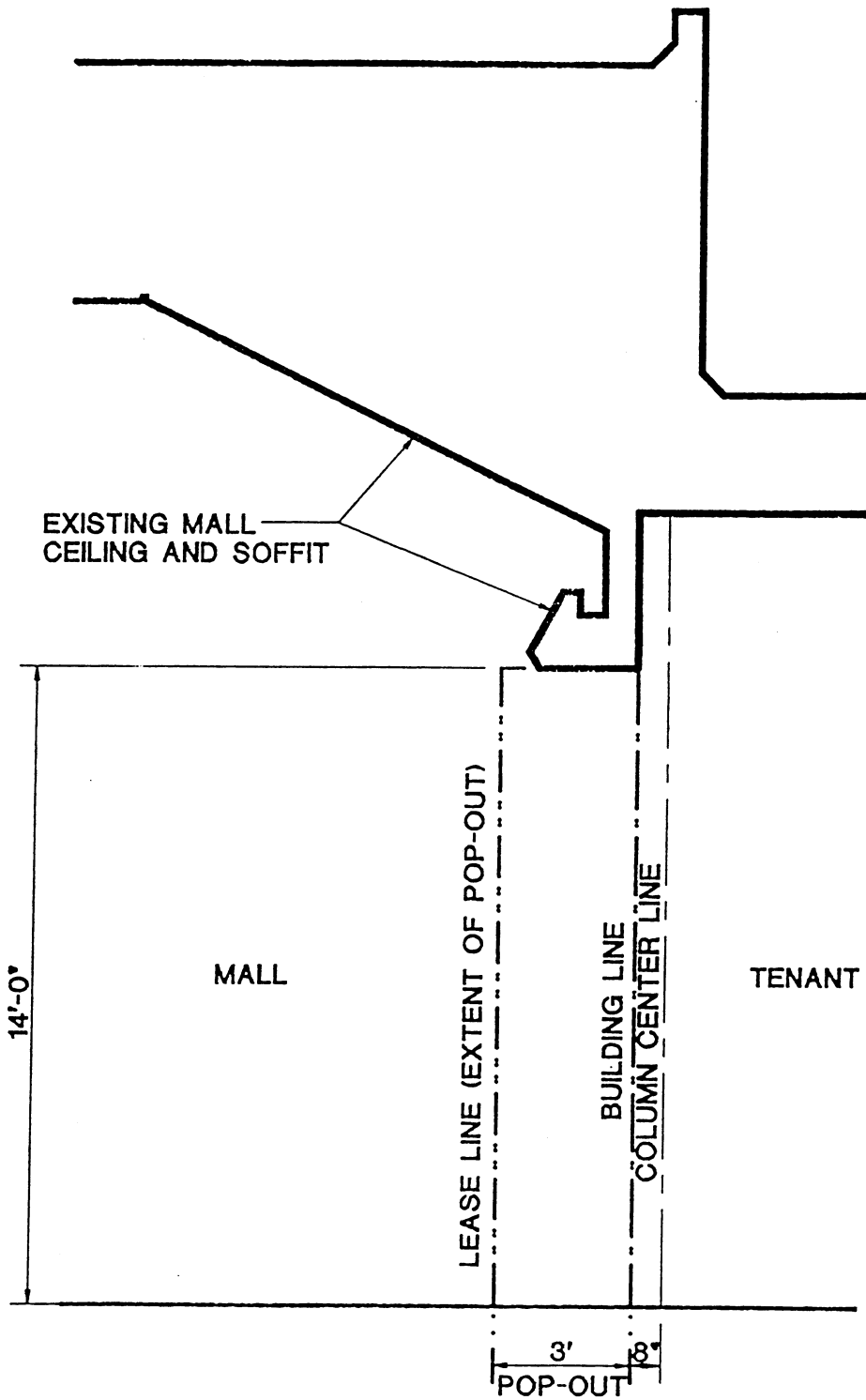
12/2/98

# STOREFRONT DETAILS



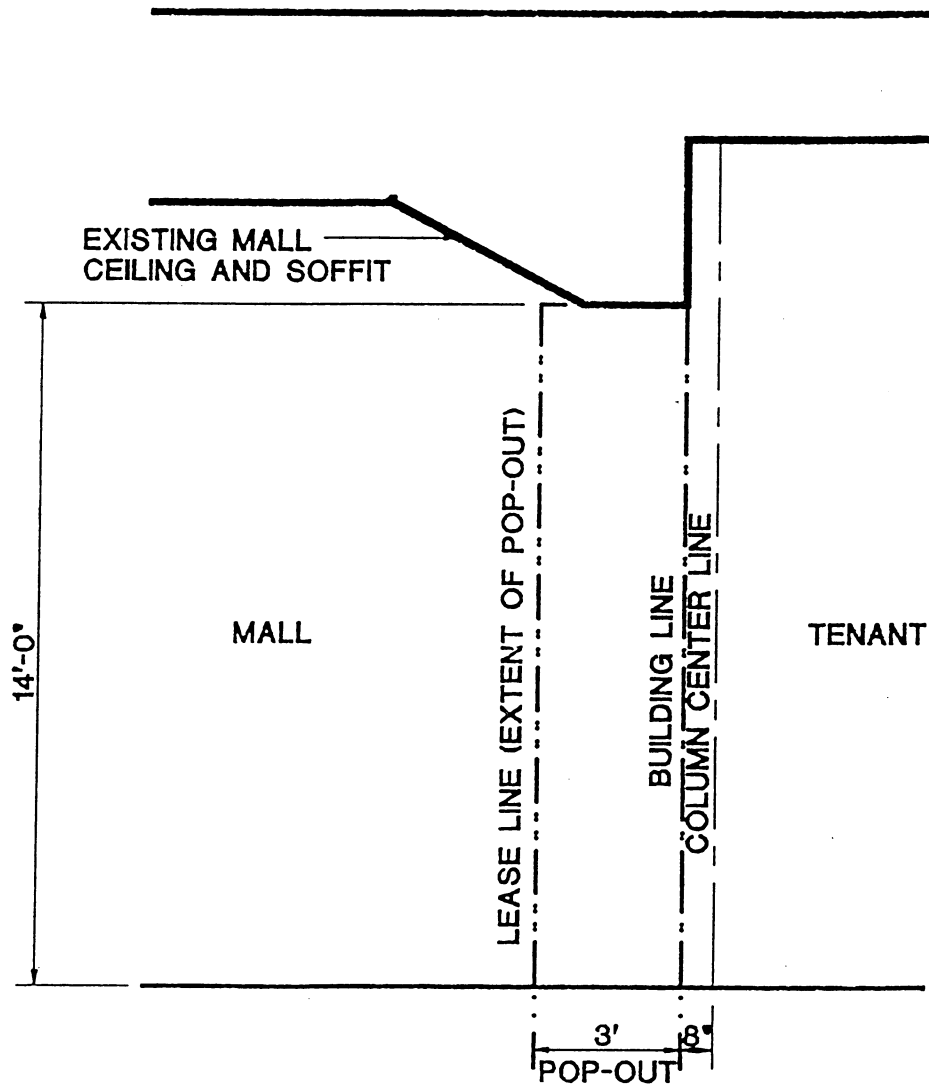
TYPICAL STOREFRONT ELEVATION  
1/4" = 1'-0"

# STOREFRONT DETAILS



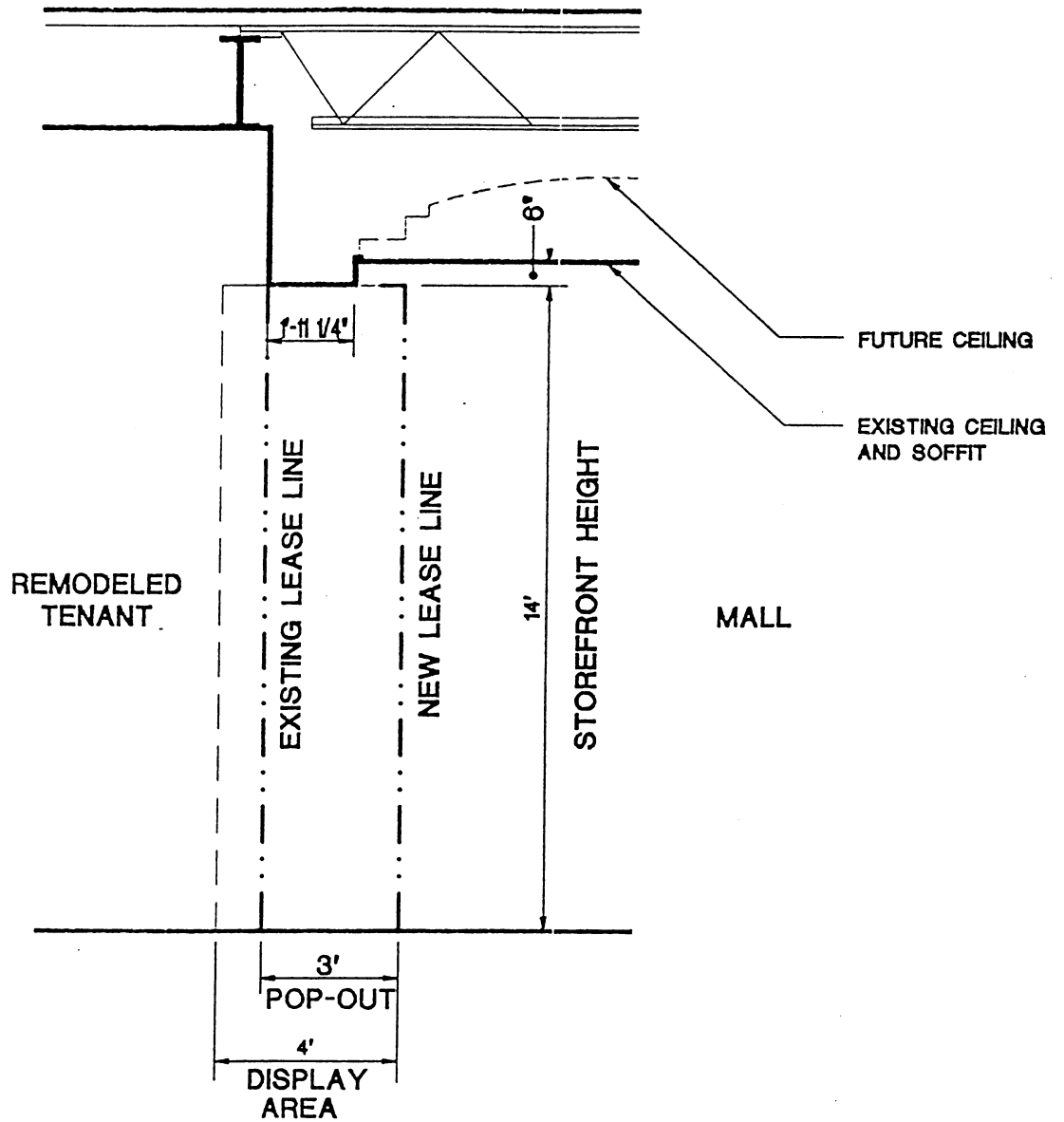
TYPICAL SECTION  
AT CENTER COURT

# STOREFRONT DETAILS



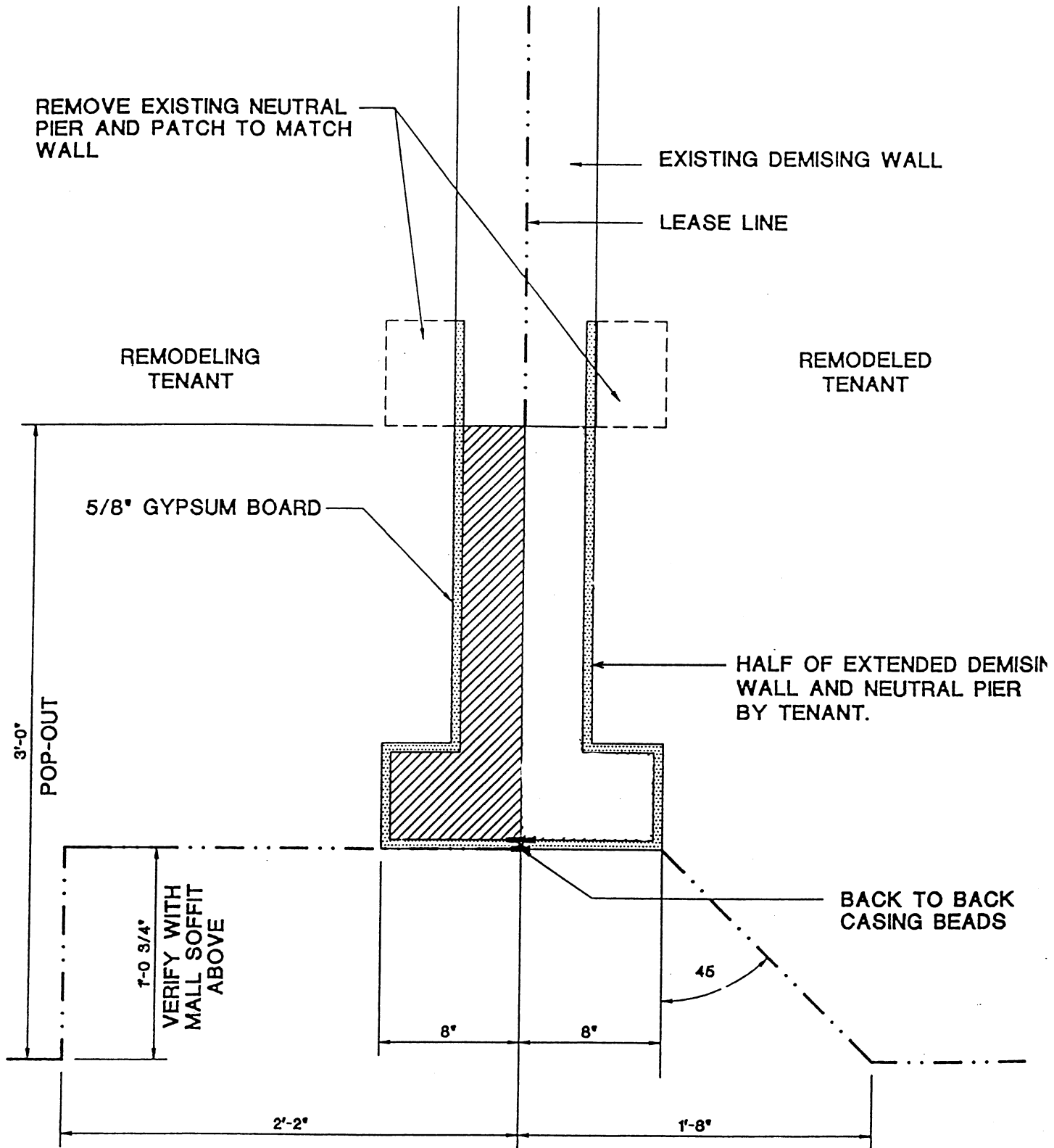
TYPICAL SECTION  
AT MALL COURT

# STOREFRONT DETAILS



TYPICAL MALL SECTION  
1/4" = 1'-0"

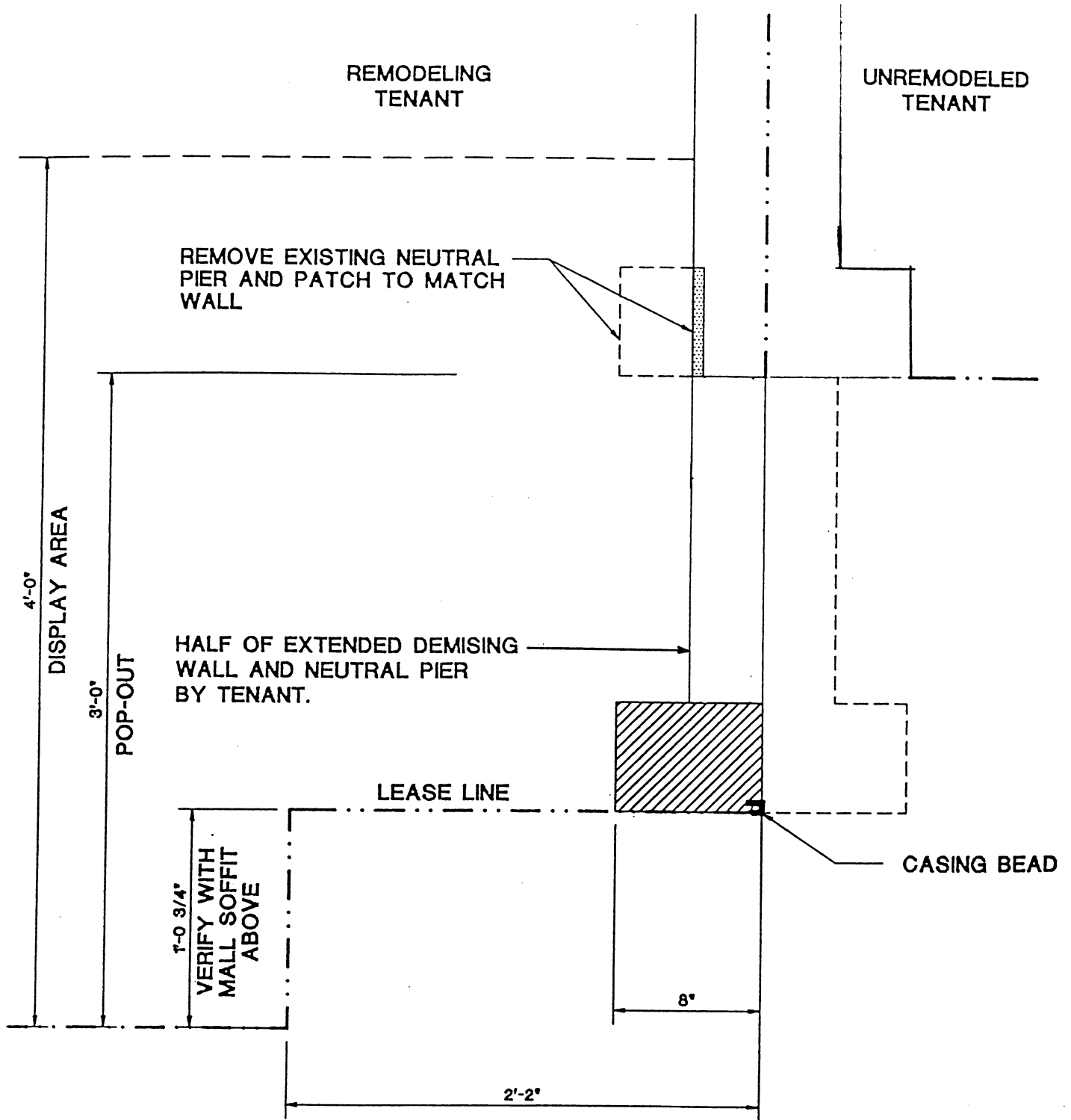
# NEUTRAL PIER DETAILS



## NEUTRAL PIER

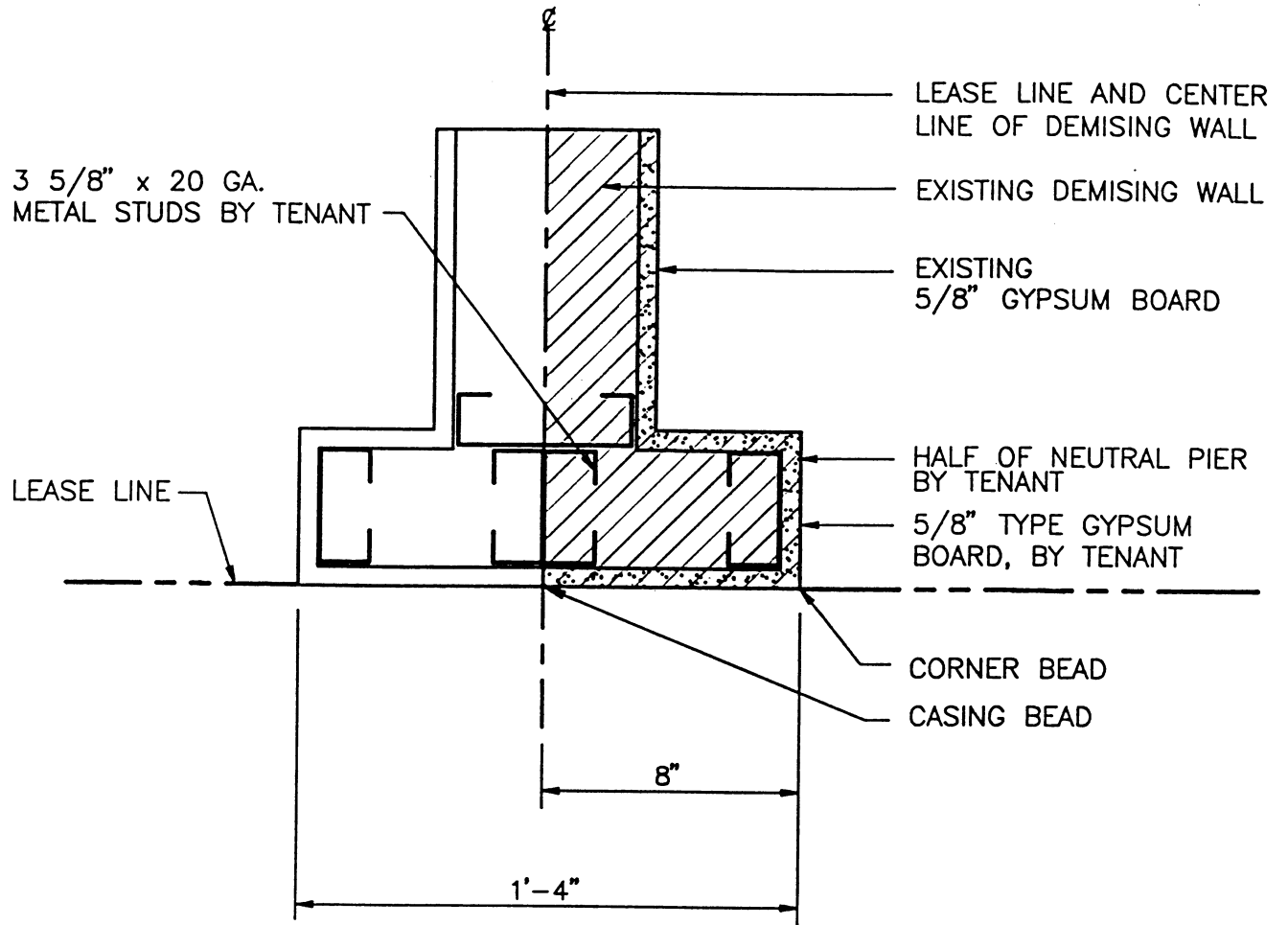


# NEUTRAL PIER DETAILS



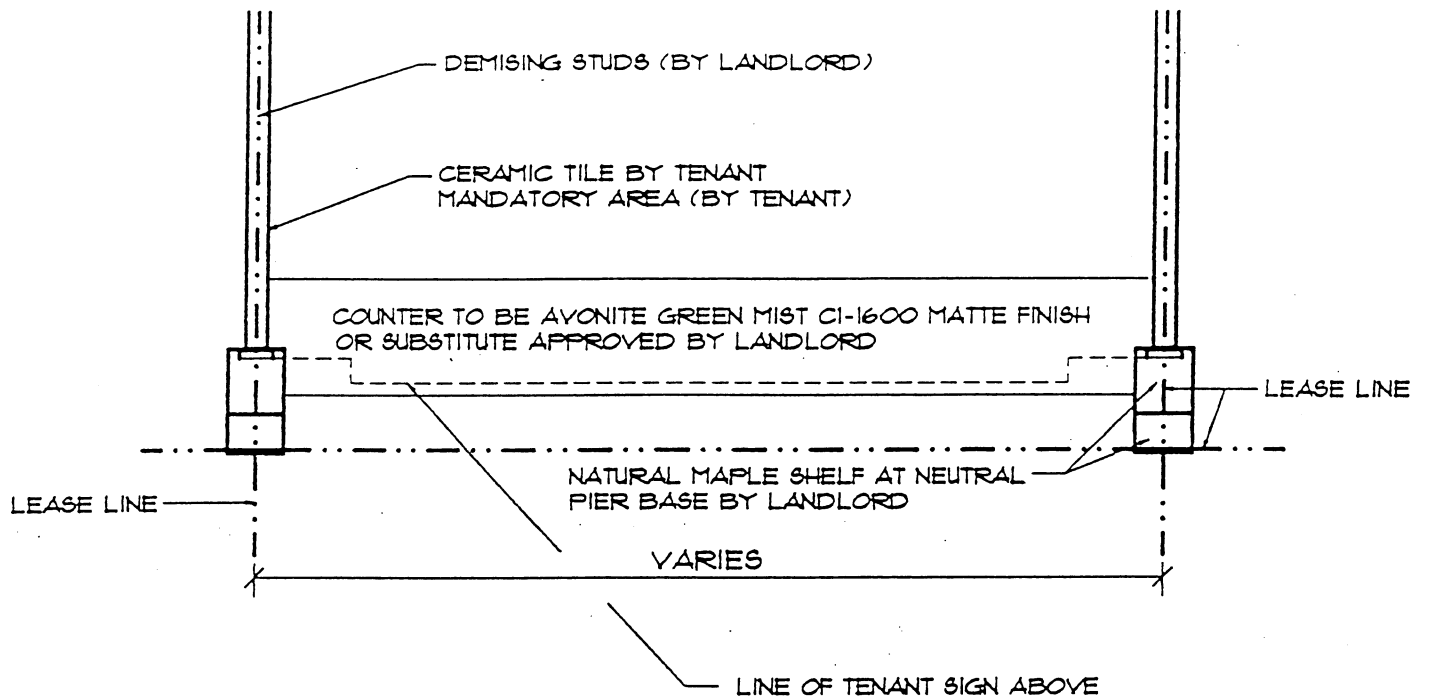
## NEUTRAL PIER

# NEUTRAL PIER DETAILS



NEUTRAL PIER DETAIL  
(For Non-Projecting Storefronts)

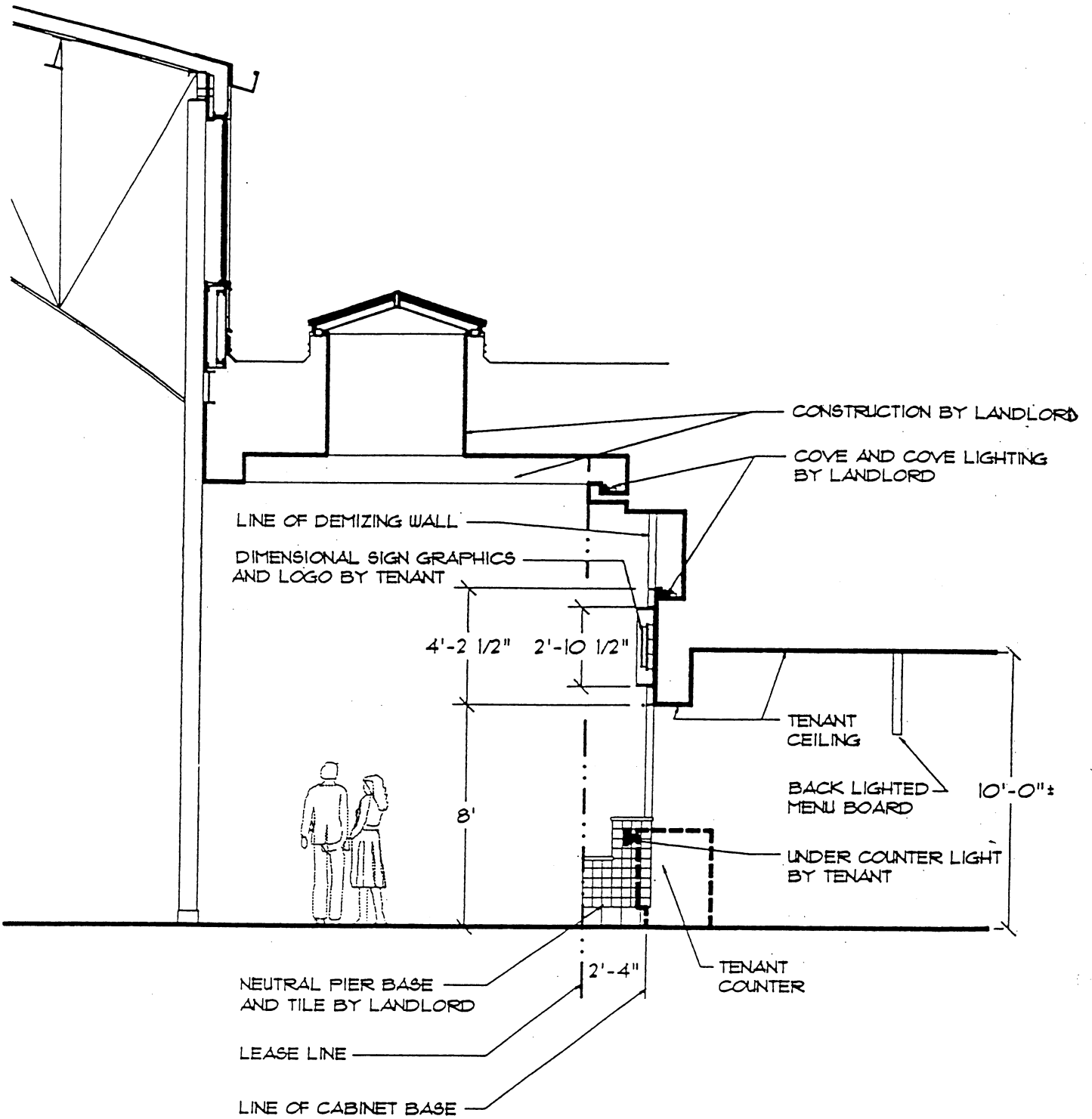
# FOOD COURT DETAILS



## TYPICAL FLOOR PLAN

SCALE: 3/16" = 1'-0"

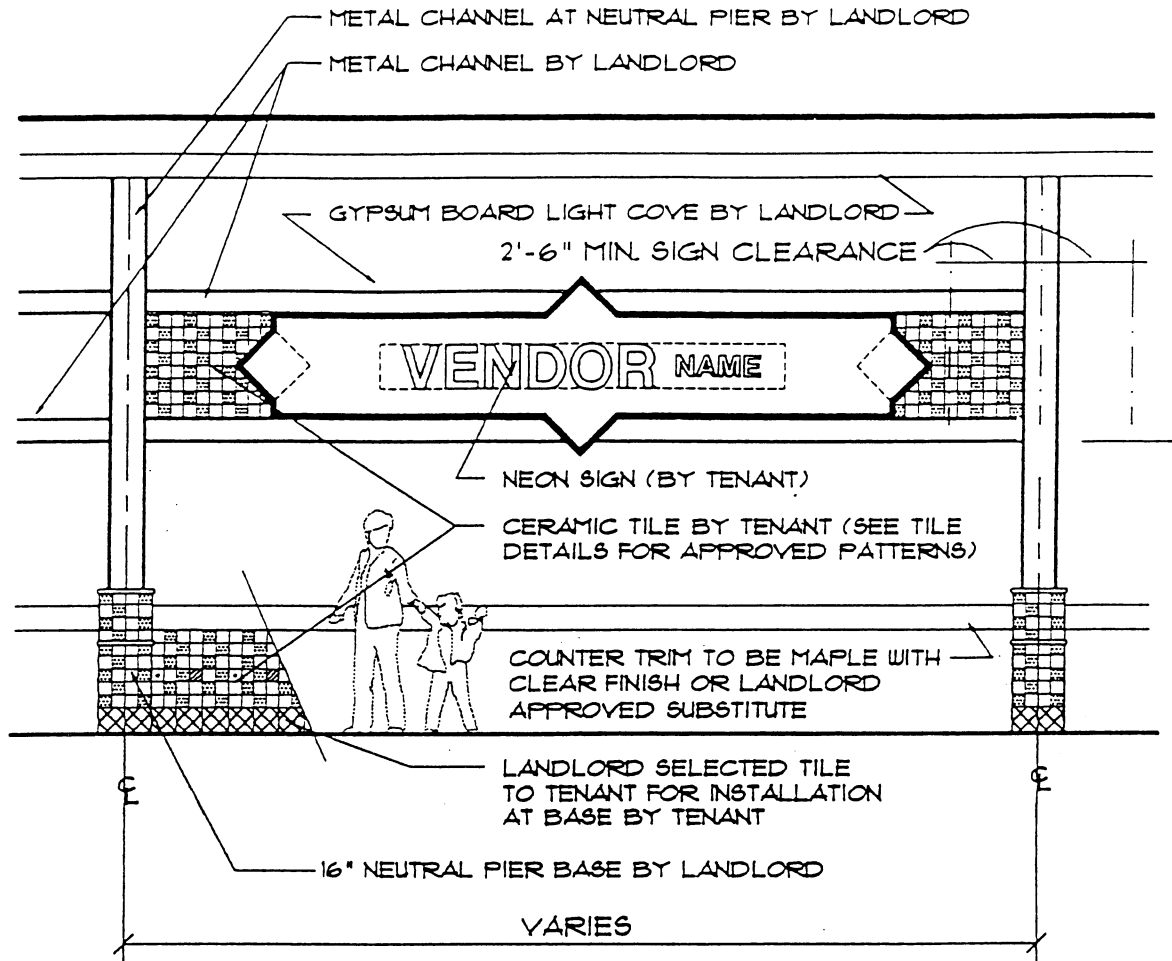
# FOOD COURT DETAILS



## TYPICAL SECTION

SCALE: 3/16" = 1'-0"

# FOOD COURT DETAILS



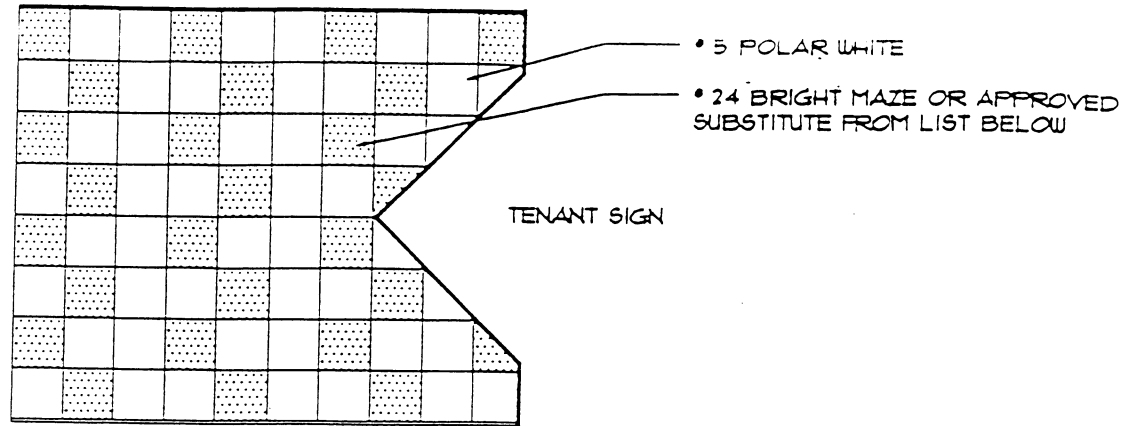
## NOTE!

SEE LANDLORD'S FOOD COURT TENANT SIGN DRAWING MS-BCJ FOR SIGN DETAILS AND DESIGN OPTIONS.

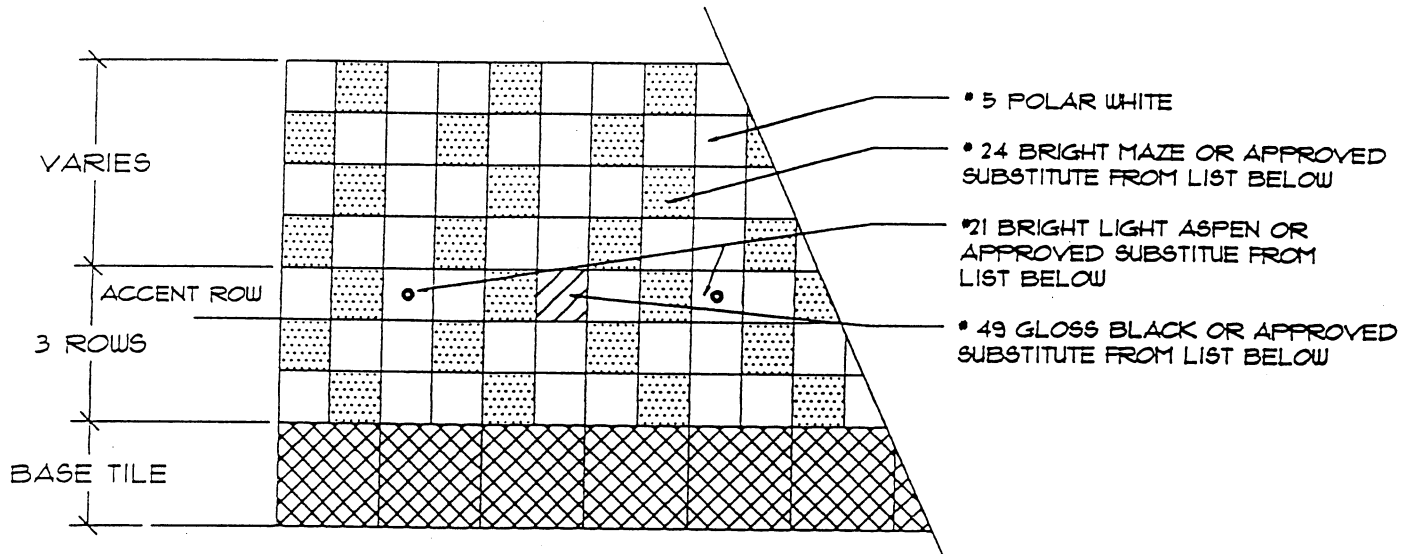
## TYPICAL STOREFRONT ELEVATION

SCALE: 3/16" = 1'-0"

## EXAMPLE OF DESIGN SOLUTION



## TENANT SIGN BAND TILE PATTERN



## TENANT BASE CABINET TILE PATTERN

### NOTE!

AMERICAN OLEAN CERAMIC TILES APPROVED BY LANDLORD FOR USE BY TENANT (NO SUBSTITUTIONS) ARE AS FOLLOWS:

- 5 POLAR WHITE
- 24 BRIGHT MAIZE
- 21 BRIGHT LIGHT ASPEN
- 101 CHERRY RED
- 102 CANARY
- 103 HUNTER GREEN
- 105 ROYAL BLUE

## TENANT TILE PATTERNS DETAILS

NO SCALE